

**STATE OF INDIANA**

**INDIANA UTILITY REGULATORY COMMISSION**

**VERIFIED PETITION OF NORTHERN INDIANA )  
PUBLIC SERVICE COMPANY FOR APPROVAL OF AN )  
ECONOMIC DEVELOPMENT PROGRAM, )  
INCLUDING VARIOUS PILOTS, TO PROMOTE THE )  
DEPLOYMENT OF ALTERNATIVE FUEL VEHICLES, ) CAUSE NO. 44016  
INCLUDING THE APPROVAL OF APPROPRIATE )  
TARIFFS AND ASSOCIATED TERMS AND )  
CONDITIONS OF SERVICE, FORMS OF STANDARD )  
CONTRACTS AND TIMELY RECOVERY OF COSTS IN )  
ACCORDANCE WITH IND. CODE § 8-1-2-42(a). )**

---

---

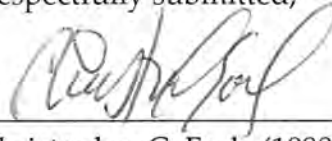
**COMPLIANCE FILING – QUARTERLY REPORT**

---

---

In accordance with the Indiana Utility Regulatory Commission's February 1, 2012 Order in this Cause, Petitioner Northern Indiana Public Service Company, by counsel, respectfully submits its Third Quarter Report covering the period August 2016 through October 2016.

Respectfully submitted,

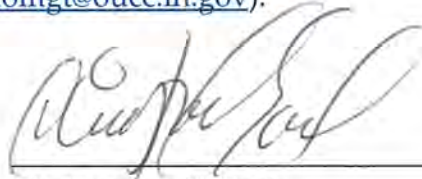


Christopher C. Earle (10809-49)  
NiSOURCE CORPORATE SERVICES – LEGAL  
150 W. Market, Suite 600  
Indianapolis, Indiana 46204  
Phone: 317.684.4904  
Fax: 317.684.4918  
Email: [cearle@nisource.com](mailto:cearle@nisource.com)

Attorney for Petitioner  
Northern Indiana Public Service  
Company

**CERTIFICATE OF SERVICE**

The undersigned hereby certifies that on December 30, 2016, the foregoing was served via email transmission upon Karol Krohn, Indiana Office of Utility Consumer Counselor, 115 W. Washington Street, Suite 1500 South, Indianapolis, Indiana 46204 ([kkrohn@oucc.in.gov](mailto:kkrohn@oucc.in.gov), [infomgt@oucc.in.gov](mailto:infomgt@oucc.in.gov)).



Christopher C. Earle

# **IN-Charge Electric Vehicle Program**

## **Cause No. 44016**

### **Quarterly Report**

**(8/1/16– 10/31/16)**



## **I. Executive Summary**

On April 8, 2011, NIPSCO filed a request in Cause No. 44016 with the Indiana Utility Regulatory Commission (“Commission”) for approval of an economic development program associated with the deployment of alternative fuel vehicles such as plug-in electric vehicles (“EVs”). The Commission approved NIPSCO’s IN-Charge Electric Vehicle Pilot Program (“Program”) through January 31, 2015 on February 1, 2012. On October 29, 2014, the Commission approved NIPSCO’s 30-day filing to extend its EV program an additional two years through January 31, 2017.<sup>1</sup>

This is NIPSCO’s third quarterly report for Program Year 5. It provides an update on implementation, participation, participant costs, expenditures and preliminary usage information for Phase I implementation which focuses on promoting EV adoption among residential participants. Additionally, information regarding NIPSCO’s Phase II Program that began in February 2014 has also been included.

Approximately two months after Commission approval, on April 2, 2012, NIPSCO launched its IN-Charge Electric Vehicle Program – “At Home.” As of October 31, 2016, NIPSCO had received 382 customer enrollment requests. NIPSCO has provided 250 customers with the incentive towards the home charging station, so therefore the home charging station incentive has been closed for new customers. Estimates for installation costs, including the cost of a home EV charger, ranged from \$667 to \$6,325 with an average of \$2,062. The average incentive amount used by customers with completed installations was \$1,629.

On August 5, 2016 NIPSCO requested a modification of its EV Program to provide that participants of record as of January 31, 2017 would be subject to an energy charge of \$0.070894 per kilowatt hour for all kilowatt hours used per month in the PEV Off-Peak Hours, plus all applicable Riders as shown on Appendix A (Riders 770, 771, 772, 774, 783, 786, 787 and 788), for a period of 23 months. Under this proposal, the EV Program would expire on December 31, 2018. NIPSCO also requested approval of necessary tariff changes to effectuate approval of the modification to the EV Program. The request is currently pending before the Commission. No new customers were enrolled in the EV Program during Quarter 3 of Program Year 5.

NIPSCO has ten Level 2 charging ports and three Level 1 charging ports at NIPSCO locations in Merrillville (4 L2 & 3 L1), Valparaiso (2 L2), Hammond (2 L2) and Crown Point (2 L2). The Merrillville stations became operational in February 2012 and the other locations in October 2013. The charging stations are connected to the Charge Point network and include capabilities that allow customers to know if the stations are currently in use.

## **II. Location of Known Plug-in Electric Vehicles:**

### **A. Summary**

Before the launch of NIPSCO’s IN-Charge Program, NIPSCO was aware of only two residential EV locations and had a general idea of the location of approximately 19 EV fleet charging locations.

---

<sup>1</sup> Under the extended EV program, the incentive of up to \$1,650 per customer was to continue for a period through January 31, 2017 or until such time as the funds set out in Rider 685 have been exhausted, whichever occurs earlier.

Since the launch of the IN-Charge Electric Vehicle Program on April 2, 2012, NIPSCO has become aware of 292 additional residential EV locations within Northern Indiana. The information regarding EV locations along with additional information regarding associated charging activity at each location provides NIPSCO with valuable information regarding the load on distribution transformers.

## B. Statistical Data - As of 10/31/2016

Count	Type	City	County	Vehicle	Year	Program Status
1	Residential	Plymouth	Marshall	Chevy Volt	2012	1. Meter Installation Completed
2	Residential	Hobart	Lake	Think City	2011	1. Meter Installation Completed
3	Residential	St. John	Lake	Think City	2012	1. Meter Installation Completed
4	Residential	Hammond	Lake	Nissan Leaf	2012	1. Meter Installation Completed
5	Residential	La Porte	La Porte	Mitsubishi Imev	2012	1. Meter Installation Completed
6	Residential	Valparaiso	Porter	Chevy Volt	2012	1. Meter Installation Completed
7	Residential	Westville	La Porte	Chevy Volt	2012	1. Meter Installation Completed
8	Residential	Highland	Lake	Chevy Volt	2012	1. Meter Installation Completed
9	Residential	Chesterton	Porter	Think City	2012	1. Meter Installation Completed
10	Residential	Crown Point	Lake	Chevy Volt	2012	1. Meter Installation Completed
11	Residential	Valparaiso	Porter	Chevy Volt	2011	1. Meter Installation Completed
12	Residential	Valparaiso	Porter	Chevy Volt	2013	1. Meter Installation Completed
13	Residential	Valparaiso	Porter	Chevy Volt	2012	1. Meter Installation Completed
14	Residential	Lowell	Lake	Chevy Volt	2012	1. Meter Installation Completed
15	Residential	Crown Point	Lake	Mitsubishi Imev	2012	1. Meter Installation Completed
16	Residential	Whiting	Lake	Chevy Volt	2012	1. Meter Installation Completed
17	Residential	Lowell	Lake	Nissan Leaf	2012	1. Meter Installation Completed
18	Residential	Whiting	Lake	Chevy Volt	2012	1. Meter Installation Completed
19	Residential	Hebron	Porter	Chevy Volt	2012	1. Meter Installation Completed
20	Residential	Valparaiso	Porter	Chevy Volt	2012	1. Meter Installation Completed
21	Residential	St. John	Lake	Chevy Volt	2012	1. Meter Installation Completed
22	Residential	Middlebury	Elkhart	Chevy Volt	2012	1. Meter Installation Completed
23	Residential	Chesterton	Porter	Chevy Volt	2012	1. Meter Installation Completed

Count	Type	City	County	Vehicle	Year	Program Status
24	Residential	Valparaiso	Porter	Chevy Volt	2012	1. Meter Installation Completed
25	Residential	Syracuse	Kosciusko	Nissan Leaf	2012	1. Meter Installation Completed
26	Residential	Chesterton	Porter	Think City	2011	1. Meter Installation Completed
27	Residential	Valparaiso	Porter	Chevy Volt	2012	1. Meter Installation Completed
28	Residential	Munster	Lake	Nissan Leaf	2012	1. Meter Installation Completed
29	Residential	Goshen	Elkhart	Nissan Leaf	2012	1. Meter Installation Completed
30	Residential	Cedar Lake	Lake	Chevy Volt	2012	1. Meter Installation Completed
31	Residential	Hammond	Lake	Chevy Volt	2012	1. Meter Installation Completed
32	Residential	Michigan City	La Porte	Nissan Leaf	2012	1. Meter Installation Completed
33	Residential	Bristol	Elkhart	Chevy Volt	2012	1. Meter Installation Completed
34	Residential	Valparaiso	Porter	Tesla Model S	2013	1. Meter Installation Completed
35	Residential	Munster	Lake	Chevy Volt	2012	1. Meter Installation Completed
36	Residential	Chesterton	Porter	Chevy Volt	2012	1. Meter Installation Completed
37	Residential	Union Mills	La Porte	Nissan Leaf	2012	1. Meter Installation Completed
38	Residential	Munster	Lake	Chevy Volt	2012	1. Meter Installation Completed
39	Residential	Dyer	Lake	Chevy Volt	2012	1. Meter Installation Completed
40	Residential	Demotte	Jasper	Chevy Volt	2011	1. Meter Installation Completed
41	Residential	Valparaiso	Porter	Chevy Volt	2013	1. Meter Installation Completed
42	Residential	Valparaiso	Porter	Chevy Volt	2011	1. Meter Installation Completed
43	Residential	Bremen	Marshall	Nissan Leaf	2012	1. Meter Installation Completed
44	Residential	Hebron	Porter	Nissan Leaf	2012	1. Meter Installation Completed
45	Residential	Middlebury	Elkhart	Chevy Volt	2013	1. Meter Installation Completed
46	Residential	St. John	Lake	Chevy Volt	2012	1. Meter Installation Completed
47	Residential	Dyer	Lake	Nissan Leaf	2012	1. Meter Installation Completed
48	Residential	Valparaiso	Porter	Chevy Volt	2013	1. Meter Installation Completed
49	Residential	Goshen	Elkhart	Ford Focus Electric	2012	1. Meter Installation Completed
50	Residential	Cedar Lake	Lake	Nissan Leaf	2012	1. Meter Installation Completed
51	Residential	Crown Point	Lake	Chevy Volt	2013	1. Meter Installation Completed

Count	Type	City	County	Vehicle	Year	Program Status
52	Residential	Warsaw	Kosciusko	Chevy Volt	2012	1. Meter Installation Completed
53	Residential	Hammond	Lake	Nissan Leaf	2012	1. Meter Installation Completed
54	Residential	Valparaiso	Porter	Chevy Volt	2012	1. Meter Installation Completed
55	Residential	Goshen	Elkhart	Ford C-Max Energi	2013	1. Meter Installation Completed
56	Residential	La Porte	La Porte	Chevy Volt	2013	1. Meter Installation Completed
57	Residential	Hobart	Lake	Chevy Volt	2013	1. Meter Installation Completed
58	Residential	Munster	Lake	Nissan Leaf	2012	1. Meter Installation Completed
59	Residential	Crown Point	Lake	Chevy Volt	2013	1. Meter Installation Completed
60	Residential	Westville	La Porte	Chevy Volt	2012	1. Meter Installation Completed
61	Residential	Dyer	Lake	Tesla Model S	2013	1. Meter Installation Completed
62	Residential	Crown Point	Lake	Ford Fusion Energi	2013	1. Meter Installation Completed
63	Residential	St. John	Lake	Chevy Volt	2013	1. Meter Installation Completed
64	Residential	Griffith	Lake	Nissan Leaf	2012	1. Meter Installation Completed
65	Residential	Hobart	Lake	Nissan Leaf	2013	1. Meter Installation Completed
66	Residential	Portage	Porter	Nissan Leaf	2012	1. Meter Installation Completed
67	Residential	Dyer	Lake	Nissan Leaf	2013	1. Meter Installation Completed
68	Residential	Cedar Lake	Lake	Chevy Volt	2013	1. Meter Installation Completed
69	Residential	Schererville	Lake	Tesla Model S	2013	1. Meter Installation Completed
70	Residential	Dyer	Lake	Nissan Leaf	2013	1. Meter Installation Completed
71	Residential	Howe	LaGrange	Ford Fusion Energi	2013	1. Meter Installation Completed
72	Residential	Highland	Lake	Nissan Leaf	2013	1. Meter Installation Completed
73	Residential	Dyer	Lake	Nissan Leaf	2013	1. Meter Installation Completed
74	Residential	Merrillville	Lake	Chevy Volt	2013	1. Meter Installation Completed
75	Residential	Plymouth	Marshall	Ford C-Max Energi	2013	1. Meter Installation Completed
76	Residential	Valparaiso	Porter	Nissan Leaf	2011	1. Meter Installation Completed
77	Residential	Dyer	Lake	Chevy Volt	2013	1. Meter Installation Completed
78	Residential	Portage	Porter	Chevy Volt	2013	1. Meter Installation Completed
79	Residential	Goshen	Elkhart	Nissan Leaf	2013	1. Meter Installation Completed

Count	Type	City	County	Vehicle	Year	Program Status
80	Residential	Crown Point	Lake	Chevy Volt	2011	1. Meter Installation Completed
81	Residential	Hobart	Lake	Chevy Volt	2013	1. Meter Installation Completed
82	Residential	Highland	Lake	Ford Fusion Energi	2013	1. Meter Installation Completed
83	Residential	Hammond	Lake	Nissan Leaf	2013	1. Meter Installation Completed
84	Residential	Schererville	Lake	Chevy Volt	2013	1. Meter Installation Completed
85	Residential	Valparaiso	Porter	Chevy Volt	2011	1. Meter Installation Completed
86	Residential	Munster	Lake	Chevy Volt	2014	1. Meter Installation Completed
87	Residential	Dyer	Lake	Chevy Volt	2013	1. Meter Installation Completed
88	Residential	Crown Point	Lake	Tesla Roadster	2010	1. Meter Installation Completed
89	Residential	Merrillville	Lake	Chevy Volt	2013	1. Meter Installation Completed
90	Residential	Crown Point	Lake	Chevy Volt	2012	1. Meter Installation Completed
91	Residential	Portage	Porter	Chevy Volt	2012	1. Meter Installation Completed
92	Residential	Goshen	Elkhart	Nissan Leaf	2013	1. Meter Installation Completed
93	Residential	Chesterton	Porter	Tesla Model S	2013	1. Meter Installation Completed
94	Residential	Crown Point	Lake	Chevy Volt	2013	1. Meter Installation Completed
95	Residential	Crown Point	Lake	Nissan Leaf	2013	1. Meter Installation Completed
96	Residential	Griffith	Lake	Nissan Leaf	2013	1. Meter Installation Completed
97	Residential	Hammond	Lake	Nissan Leaf	2013	1. Meter Installation Completed
98	Residential	La Porte	La Porte	Chevy Volt	2013	1. Meter Installation Completed
99	Residential	Hobart	Lake	Ford C-Max Energi	2013	1. Meter Installation Completed
100	Residential	Munster	Lake	Tesla Model S	2013	1. Meter Installation Completed
101	Residential	Warsaw	Kosciusko	Chevy Volt	2013	1. Meter Installation Completed
102	Residential	Lowell	Lake	Chevy Volt	2014	1. Meter Installation Completed
103	Residential	Chesterton	Porter	Tesla Model S	2014	1. Meter Installation Completed
104	Residential	Goshen	Elkhart	Tesla Model S	2013	1. Meter Installation Completed
105	Residential	Goshen	Elkhart	Ford C-Max Energi	2013	1. Meter Installation Completed
106	Residential	Cedar Lake	Lake	Nissan Leaf	2013	1. Meter Installation Completed
107	Residential	Demotte	Jasper	Nissan Leaf	2013	1. Meter Installation Completed



Count	Type	City	County	Vehicle	Year	Program Status
108	Residential	Crown Point	Lake	Chevy Volt	2014	1. Meter Installation Completed
109	Residential	Goshen	Elkhart	Nissan Leaf	2014	1. Meter Installation Completed
110	Residential	Warsaw	Kosciusko	Tesla Model S	2013	1. Meter Installation Completed
111	Residential	Valparaiso	Porter	Toyota Prius Plug In	2013	1. Meter Installation Completed
112	Residential	Schererville	Lake	Nissan Leaf	2013	1. Meter Installation Completed
113	Residential	Shelby	Lake	Nissan Leaf	2014	1. Meter Installation Completed
114	Residential	Valparaiso	Porter	Chevy Volt	2014	1. Meter Installation Completed
115	Residential	Hobart	Lake	Nissan Leaf	2013	1. Meter Installation Completed
116	Residential	Hobart	Lake	Nissan Leaf	2014	1. Meter Installation Completed
117	Residential	Schererville	Lake	Ford Fusion Energi	2014	1. Meter Installation Completed
118	Residential	Crown Point	Lake	Tesla Model S	2014	1. Meter Installation Completed
119	Residential	Gary	Lake	Chevy Volt	2013	1. Meter Installation Completed
120	Residential	Valparaiso	Porter	Chevy Volt	2014	1. Meter Installation Completed
121	Residential	Griffith	Lake	Chevy Volt	2013	1. Meter Installation Completed
122	Residential	Michiana Shores	La Porte	Tesla Model S	2013	1. Meter Installation Completed
123	Residential	Lowell	Lake	Nissan Leaf	2013	1. Meter Installation Completed
124	Residential	Valparaiso	Porter	Tesla Model S	2014	1. Meter Installation Completed
125	Residential	Hebron	Porter	Ford Fusion Energi	2014	1. Meter Installation Completed
126	Residential	Munster	Lake	Tesla Model S	2014	1. Meter Installation Completed
127	Residential	Merrillville	Lake	Nissan Leaf	2013	1. Meter Installation Completed
128	Residential	Mentone	Kosciusko	Chevy Volt	2013	1. Meter Installation Completed
129	Residential	Mentone	Kosciusko	Fisker Karma	2012	1. Meter Installation Completed
130	Residential	Schererville	Lake	Ford Focus Electric	2014	1. Meter Installation Completed
131	Residential	Highland	Lake	Nissan Leaf	2014	1. Meter Installation Completed
132	Residential	Valparaiso	Porter	Tesla Model S	2014	1. Meter Installation Completed
133	Residential	Valparaiso	Porter	Ford C-Max Energi	2014	1. Meter Installation Completed
134	Residential	Monticello	white	Chevy Volt	2013	1. Meter Installation Completed
135	Residential	Portage	Porter	Tesla Model S	2014	1. Meter Installation Completed

Count	Type	City	County	Vehicle	Year	Program Status
136	Residential	Crown Point	Lake	Ford Fusion Energi	2014	1. Meter Installation Completed
137	Residential	Chesterton	Porter	Chevy Volt	2014	1. Meter Installation Completed
138	Residential	Crown Point	Lake	Nissan Leaf	2013	1. Meter Installation Completed
139	Residential	Schererville	Lake	Chevy Volt	2015	1. Meter Installation Completed
140	Residential	Warsaw	Kosciusko	Nissan Leaf	2014	1. Meter Installation Completed
141	Residential	Plymouth	Marshall	Chevy Volt	2011	1. Meter Installation Completed
142	Residential	Gary	Lake	Nissan Leaf	2014	1. Meter Installation Completed
143	Residential	Goshen	Elkhart	Nissan Leaf	2015	1. Meter Installation Completed
144	Residential	Valparaiso	Porter	Chevy Volt	2013	1. Meter Installation Completed
145	Residential	Hammond	Lake	Chevy Volt	2014	1. Meter Installation Completed
146	Residential	Westville	La Porte	Chevy Volt	2013	1. Meter Installation Completed
147	Residential	Schererville	Lake	Tesla Model S	2014	1. Meter Installation Completed
148	Residential	Goshen	Elkhart	Chevy Volt	2014	1. Meter Installation Completed
149	Residential	Valparaiso	Porter	Ford Fusion Energi	2015	1. Meter Installation Completed
150	Residential	Portage	Porter	Chevy Volt	2013	1. Meter Installation Completed
151	Residential	Chesterton	Porter	Nissan Leaf	2014	1. Meter Installation Completed
152	Residential	Munster	Lake	Chevy Volt	2014	1. Meter Installation Completed
153	Residential	Goshen	Elkhart	Chevy Volt	2014	1. Meter Installation Completed
154	Residential	Portage	Porter	Chevy Volt	2013	1. Meter Installation Completed
155	Residential	Schererville	Lake	Tesla Model S	2014	1. Meter Installation Completed
156	Residential	Gary	Lake	Nissan Leaf	2013	1. Meter Installation Completed
157	Residential	La Porte	La Porte	Nissan Leaf	2013	1. Meter Installation Completed
158	Residential	Gary	Lake	BMW i3	2014	1. Meter Installation Completed
159	Residential	Portage	Porter	Chevy Volt	2013	1. Meter Installation Completed
160	Residential	Schererville	Lake	Tesla Model S	2015	1. Meter Installation Completed
161	Residential	Mr. Ayr	Newton	Chevy Volt	2014	1. Meter Installation Completed
162	Residential	Dyer	Lake	Chevy Volt	2015	1. Meter Installation Completed
163	Residential	La Porte	La Porte	Tesla Model S	2014	1. Meter Installation Completed

Count	Type	City	County	Vehicle	Year	Program Status
164	Residential	Merrillville	Lake	Nissan Leaf	2015	1. Meter Installation Completed
165	Residential	Valparaiso	Porter	Chevy Volt	2014	1. Meter Installation Completed
166	Residential	Valparaiso	Porter	Chevy Volt	2014	1. Meter Installation Completed
167	Residential	Valparaiso	Porter	Chevy Volt	2013	1. Meter Installation Completed
168	Residential	Portage	Porter	Chevy Volt	2011	1. Meter Installation Completed
169	Residential	Valparaiso	Porter	Ford Fusion Energi	2015	1. Meter Installation Completed
170	Residential	Crown Point	Lake	BMW i3	2015	1. Meter Installation Completed
171	Residential	Chesterton	Porter	Chevy Volt	2013	1. Meter Installation Completed
172	Residential	Chesterton	Porter	Tesla Model S	2014	1. Meter Installation Completed
173	Residential	Valparaiso	Porter	Nissan Leaf	2015	1. Meter Installation Completed
174	Residential	Crown Point	Lake	Chevy Volt	2015	1. Meter Installation Completed
175	Residential	Valparaiso	Porter	Ford C-Max Energi	2013	1. Meter Installation Completed
176	Residential	Dyer	Lake	Chevy Volt	2011	1. Meter Installation Completed
177	Residential	St. John	Lake	Chevy Volt	2014	1. Meter Installation Completed
178	Residential	Goshen	Elkhart	Nissan Leaf	2015	1. Meter Installation Completed
179	Residential	Crown Point	Lake	Ford C-Max Energi	2013	1. Meter Installation Completed
180	Residential	Munster	Lake	BMW i3	2014	1. Meter Installation Completed
181	Residential	Long Beach	La Porte	Tesla Model S	2015	1. Meter Installation Completed
182	Residential	Chesterton	Porter	Nissan Leaf	2015	1. Meter Installation Completed
183	Residential	St. John	Lake	Tesla Model S	2015	1. Meter Installation Completed
184	Residential	St. John	Lake	Tesla Model S	2015	1. Meter Installation Completed
185	Residential	St. John	Lake	Chevy Volt	2013	1. Meter Installation Completed
186	Residential	Warsaw	Kosciusko	Chevy Volt	2012	1. Meter Installation Completed
187	Residential	Dyer	Lake	Tesla Model S	2015	1. Meter Installation Completed
188	Residential	Gary	Lake	Chevy Volt	2015	1. Meter Installation Completed
189	Residential	Dyer	Lake	Chevy Volt	2013	1. Meter Installation Completed
190	Residential	La Porte	La Porte	Chevy Volt	2012	1. Meter Installation Completed
191	Residential	Bremen	Marshall	Chevy Volt	2014	1. Meter Installation Completed

Count	Type	City	County	Vehicle	Year	Program Status
192	Residential	Valparaiso	Porter	Tesla Model S	2015	1. Meter Installation Completed
193	Residential	Munster	Lake	Tesla Model S	2015	1. Meter Installation Completed
194	Residential	Valparaiso	Porter	Tesla Model S	2015	1. Meter Installation Completed
195	Residential	Goshen	Elkhart	Chevy Volt	2014	1. Meter Installation Completed
196	Residential	Michigan City	La Porte	Tesla Model S	2015	1. Meter Installation Completed
197	Residential	Crown Point	Lake	Chevy Volt	2013	1. Meter Installation Completed
198	Residential	Portage	Porter	Nissan Leaf	2015	1. Meter Installation Completed
199	Residential	Hobart	Lake	Chevy Volt	2014	1. Meter Installation Completed
200	Residential	Crown Point	Lake	Nissan Leaf	2015	1. Meter Installation Completed
201	Residential	Schererville	Lake	Tesla Model S	2015	1. Meter Installation Completed
202	Residential	Highland	Lake	Chevy Volt	2015	1. Meter Installation Completed
203	Residential	Crown Point	Lake	Chevy Volt	2012	1. Meter Installation Completed
204	Residential	New Paris	Elkhart	Nissan Leaf	2011	1. Meter Installation Completed
205	Residential	Liberty	Union	Ford Fusion Energi	2016	1. Meter Installation Completed
206	Residential	Monticello	White	Chevy Volt	2012	1. Meter Installation Completed
207	Residential	Lowell	Lake	Chevy Volt	2012	1. Meter Installation Completed
208	Residential	Culver	Marshall	Chevy Volt	2013	1. Meter Installation Completed
209	Residential	Lowell	Lake	Chevy Volt	2015	1. Meter Installation Completed
210	Residential	Chesterton	Porter	Nissan Leaf	2015	1. Meter Installation Completed
211	Residential	Angola	Steuben	Nissan Leaf	2013	1. Meter Installation Completed
212	Residential	Valparaiso	Porter	Nissan Leaf	2013	1. Meter Installation Completed
213	Residential	Crown Point	Lake	Ford C-Max Energi	2015	1. Meter Installation Completed
214	Residential	Valparaiso	Porter	Tesla Model X	2015	1. Meter Installation Completed
215	Residential	Hobart	Lake	Ford Fusion Energi	2015	1. Meter Installation Completed
216	Residential	Valparaiso	Porter	Nissan Leaf	2013	1. Meter Installation Completed
217	Residential	Gary	Lake	Nissan Leaf	2012	1. Meter Installation Completed
218	Residential	Gary	Lake	Tesla Model S	2015	1. Meter Installation Completed
219	Residential	Whiting	Lake	Nissan Leaf	2015	1. Meter Installation Completed

Count	Type	City	County	Vehicle	Year	Program Status
220	Residential	Griffith	Lake	Nissan Leaf	2012	1. Meter Installation Completed
221	Residential	Monticello	White	Nissan Leaf	2013	1. Meter Installation Completed
222	Residential	Chesterton	Porter	Tesla Model S	2016	1. Meter Installation Completed
223	Residential	Warsaw	Kosciusko	BMW i3	2015	1. Meter Installation Completed
224	Residential	Hobart	Lake	Nissan Leaf	2013	1. Meter Installation Completed
225	Residential	Griffith	Lake	Ford Focus Electric	2016	1. Meter Installation Completed
226	Residential	Portage	Porter	Ford C-Max Energi	2013	1. Meter Installation Completed
227	Residential	Goshen	Elkhart	Chevy Volt	2014	1. Meter Installation Completed
228	Residential	Valparaiso	Porter	Chevy Volt	2013	1. Meter Installation Completed
229	Residential	Cedar Lake	Lake	Mitsubishi Imev	2012	1. Meter Installation Completed
230	Residential	Goshen	Elkhart	Nissan Leaf	2015	1. Meter Installation Completed
231	Residential	Highland	Lake	BMW i3	2015	1. Meter Installation Completed
232	Residential	Valparaiso	Porter	Ford Fusion Energi	2013	1. Meter Installation Completed
233	Residential	Valparaiso	Porter	Tesla Model S	2015	1. Meter Installation Completed
234	Residential	St. John	Lake	Nissan Leaf	2013	1. Meter Installation Completed
235	Residential	Crown Point	Lake	Cadillac ELR	2014	1. Meter Installation Completed
236	Residential	Dyer	Lake	Ford Fusion Energi	2013	1. Meter Installation Completed
237	Residential	Valparaiso	Porter	Nissan Leaf	2012	1. Meter Installation Completed
238	Residential	Valparaiso	Porter	Tesla Model S	2016	1. Meter Installation Completed
239	Residential	Valparaiso	Porter	Cadillac ELR	2014	1. Meter Installation Completed
240	Residential	Chesterton	Porter	Porsche Cayenne SE Hybrid	2016	1. Meter Installation Completed
241	Residential	St. John	Lake	Porsche Cayenne SE Hybrid	2016	1. Meter Installation Completed
242	Residential	Dyer	Lake	Nissan Leaf	2015	1. Meter Installation Completed
243	Residential	Goshen	Elkhart	Nissan Leaf	2012	1. Meter Installation Completed
244	Residential	La Porte	La Porte	Tesla Model X	2016	1. Meter Installation Completed
245	Residential	Schererville	Lake	Porsche Cayenne SE Hybrid	2016	1. Meter Installation Completed
246	Residential	Portage	Porter	Ford Focus Electric	2012	1. Meter Installation Completed

Count	Type	City	County	Vehicle	Year	Program Status
247	Residential	Goshen	Elkhart	Chevy Volt	2011	1. Meter Installation Completed
248	Residential	Dyer	Lake	Nissan Leaf	2013	1. Meter Installation Completed
249	Residential	Syracuse	Kosciusko	Tesla Model S	2014	1. Meter Installation Completed
250	Residential	Hobart	Lake	Smart	2013	1. Meter Installation Completed
251	Residential	n/a	n/a	n/a	n/a	5. Customer Requested to be Recontacted at Later Date
252	Residential	Whiting	Lake	n/a	n/a	5a. General Inquiry
253	Residential	n/a	n/a	n/a	n/a	5a. General Inquiry
254	Residential	n/a	n/a	n/a	n/a	5a. General Inquiry
255	Residential	n/a	n/a	n/a	n/a	5a. General Inquiry
256	Residential	n/a	n/a	n/a	n/a	5a. General Inquiry
257	Residential	n/a	n/a	n/a	n/a	5a. General Inquiry
258	Residential	n/a	n/a	n/a	n/a	5a. General Inquiry
259	Residential	n/a	n/a	n/a	n/a	5a. General Inquiry
260	Residential	0	0	0	0	5a. General Inquiry
261	Residential	Valparaiso	Porter	Chevy Volt	2012	6. Customer Opt Out
262	Residential	Valparaiso	Porter	Chevy Volt	2012	6. Customer Opt Out
263	Residential	Chesterton	Porter	Nissan Leaf	2012	6. Customer Opt Out
264	Residential	Lowell	Lake	n/a	n/a	6. Customer Opt Out
265	Residential	Westville	La Porte	0	n/a	6. Customer Opt Out
266	Residential	Valparaiso	Porter	Nissan Leaf	n/a	6. Customer Opt Out
267	Residential	Valparaiso	Porter	Ford Fusion Energi	0	6. Customer Opt Out
268	Residential	Portage	Porter	Tesla Model S	2012	6. Customer Opt Out
269	Residential	Valparaiso	Porter	Chevy Volt	2012	6. Customer Opt Out
270	Residential	Schererville	Lake	Chevy Volt	2013	6. Customer Opt Out
271	Residential	Valparaiso	Porter	Chevy Volt	2013	6. Customer Opt Out
272	Residential	Crown Point	Lake	Nissan Leaf	2012	6. Customer Opt Out
273	Residential	n/a	n/a	n/a	n/a	6. Customer Opt Out
274	Residential	0	0	0	0	6. Customer Opt Out

Count	Type	City	County	Vehicle	Year	Program Status
275	Residential	Valparaiso	Porter	Tesla Model S	2013	6. Customer Opt Out
276	Residential	Whiting	Lake	n/a	n/a	6. Customer Opt Out
277	Residential	Beverly Shores	Porter	0	0	6. Customer Opt Out
278	Residential	Crown Point	Lake	Nissan Leaf	2013	6. Customer Opt Out
279	Residential	Monticello	White	Toyota Rav 4 EV	2012	6. Customer Opt Out
280	Residential	Schererville	Lake	Chevy Volt	2013	6. Customer Opt Out
281	Residential	Duneland Beach	La Porte	Tesla Model S	2013	6. Customer Opt Out
282	Residential	Munster	Lake	Chevy Volt	2012	6. Customer Opt Out
283	Residential	Michigan City	La Porte	Chevy Volt	2012	6. Customer Opt Out
284	Residential	Schererville	Lake	Nissan Leaf	2013	6. Customer Opt Out
285	Residential	Beverly Shores	Porter	Toyota Prius Plug In	2013	6. Customer Opt Out
286	Residential	Chesterton	Porter	Chevy Volt	2013	6. Customer Opt Out
287	Residential	Crown Point	Lake	Chevy Volt	2014	6. Customer Opt Out
288	Residential	Schererville	Lake	Tesla Model S	2014	6. Customer Opt Out
289	Residential	Portage	Porter	Chevy Volt	2013	6. Customer Opt Out
290	Residential	Westville	La Porte	0	0	6. Customer Opt Out
291	Residential	Whiting	Lake	Nissan Leaf	2013	6. Customer Opt Out
292	Residential	Whiting	Lake	Chevy Volt	2014	6. Customer Opt Out
293	Residential	Dyer	Lake	Tesla Model S	2014	6. Customer Opt Out
294	Residential	Chesterton	Porter	Chevy Volt	2014	6. Customer Opt Out
295	Residential	Warsaw	Kosciusko	Chevy Volt	2014	6. Customer Opt Out
296	Residential	Crown Point	Lake	Tesla Model S	2014	6. Customer Opt Out
297	Residential	Crown Point	Lake	Ford Focus Electric	2013	6. Customer Opt Out
298	Residential	Portage	Porter	Tesla Model S	2015	6. Customer Opt Out
299	Residential	Goshen	Elkhart	Ford C-Max Energi	2014	6. Customer Opt Out
300	Residential	Valparaiso	Porter	Nissan Leaf	2014	6. Customer Opt Out
301	Residential	Griffith	Lake	Chevy Volt	2014	6. Customer Opt Out
302	Residential	Munster	Lake	Chevy Volt	2013	6. Customer Opt Out

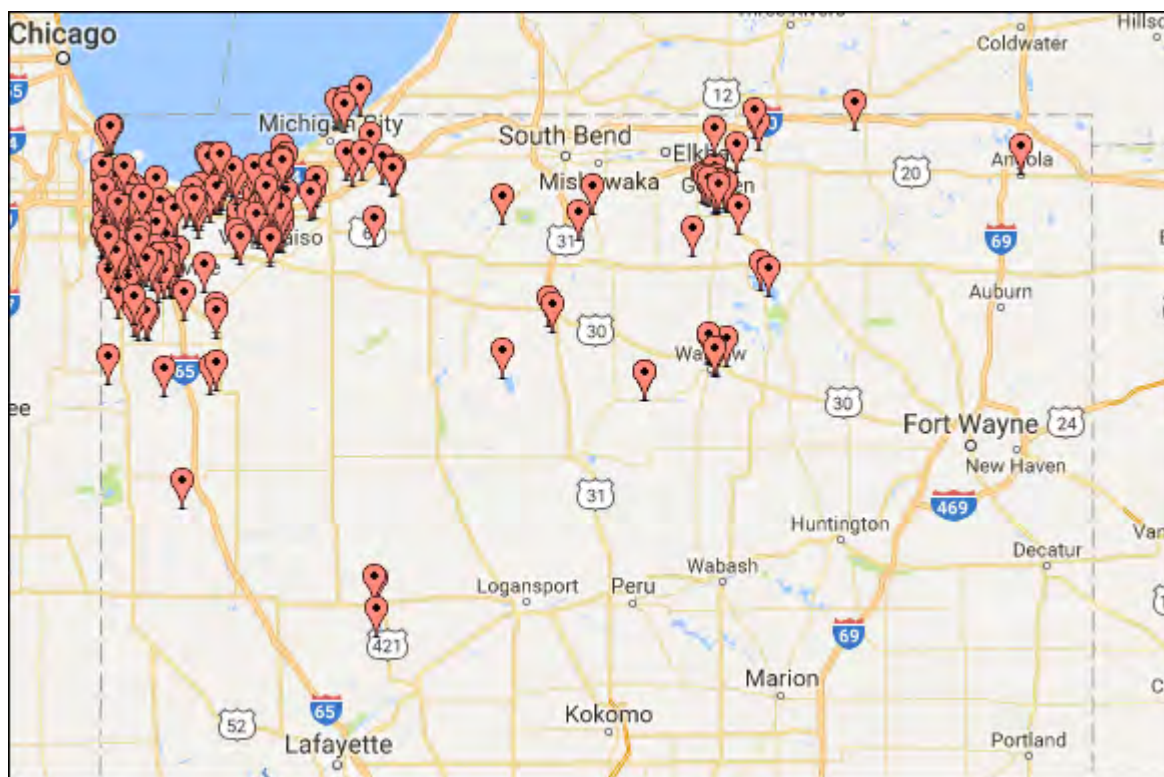
Count	Type	City	County	Vehicle	Year	Program Status
303	Residential	Cedar Lake	Lake	Chevy Volt	2013	6. Customer Opt Out
304	Residential	Valparaiso	Porter	Tesla Model X	2014	6. Customer Opt Out
305	Residential	Middlebury	Elkhart	Ford C-Max Energi	2014	6. Customer Opt Out
306	Residential	Griffith	Lake	Chevy Volt	2013	6. Customer Opt Out
307	Residential	Hobart	Lake	Ford C-Max Energi	2014	6. Customer Opt Out
308	Residential	Hebron	Porter	Chevy Volt	2013	6. Customer Opt Out
309	Residential	Elkhart	Elkhart	Nissan Leaf	2015	6. Customer Opt Out
310	Residential	Valparaiso	Porter	Nissan Leaf	2015	6. Customer Opt Out
311	Residential	La Porte	La Porte	Tesla Model X	2015	6. Customer Opt Out
312	Residential	La Porte	La Porte	Nissan Leaf	2015	6. Customer Opt Out
313	Residential	Cedar Lake	Lake	Chevy Volt	2015	6. Customer Opt Out
314	Residential	Goshen	Elkhart	Nissan Leaf	2012	6. Customer Opt Out
315	Residential	Syracuse	Kosciusko	Tesla Model S	2014	6. Customer Opt Out
316	Residential	Demotte	Jasper	Ford Fusion Energi	2015	6. Customer Opt Out
317	Residential	Valparaiso	Porter	Chevy Volt	2012	6. Customer Opt Out
318	Residential	Munster	Lake	Chevy Volt	2012	6. Customer Opt Out
319	Residential	Elkhart	Elkhart	Chevy Volt	2014	6. Customer Opt Out
320	Residential	Mishawaka	St. Joseph	Tesla Model S	2013	6. Customer Opt Out
321	Residential	Crown Point	Lake	Nissan Leaf	2015	6. Customer Opt Out
322	Residential	North Judson	Starke	Ford Fusion Energi	2013	6. Customer Opt Out
323	Residential	Highland	Lake	Chevy Volt	2012	6. Customer Opt Out
324	Residential	Chesterton	Porter	Chevy Volt	2012	6. Customer Opt Out
325	Residential	Valparaiso	Porter	Nissan Leaf	2013	6. Customer Opt Out
326	Residential	Silver Lake	Kosciusko	Chevy Volt	2013	6. Customer Opt Out
327	Residential	Leesburg	Kosciusko	Tesla Model S	2015	6. Customer Opt Out
328	Residential	Crown Point	Lake	Chevy Volt	2012	6. Customer Opt Out
329	Residential	Crown Point	Lake	BMW i3	2015	6. Customer Opt Out
330	Residential	Valparaiso	Porter	Chevy Volt	2014	6. Customer Opt Out



Count	Type	City	County	Vehicle	Year	Program Status
331	Residential	North Judson	Starke	Chevy Volt	2016	6. Customer Opt Out
332	Residential	Demotte	Jasper	Chevy Volt	2011	6. Customer Opt Out
333	Residential	Hammond	Lake	Nissan Leaf	2011	6. Customer Opt Out
334	Residential	Beverly Shores	Porter	BMW i3	2016	6. Customer Opt Out
335	Residential	Munster	Lake	Tesla Model S	2015	6. Customer Opt Out
336	Residential	Valparaiso	Porter	Tesla Model S	2016	6. Customer Opt Out
337	Residential	Lowell	Lake	BMW i3	2014	6. Customer Opt Out
338	Residential	La Porte	La Porte	Tesla Model S	2015	6. Customer Opt Out
339	Residential	Valparaiso	Porter	Nissan Leaf	2015	6. Customer Opt Out
340	Residential	Valparaiso	Porter	BMW i3	2014	6. Customer Opt Out
341	Residential	Munster	Lake	Tesla Model S	2012	6. Customer Opt Out
342	Residential	Winona Lake	Kosciusko	Chevy Volt	2013	6. Customer Opt Out
343	Residential	Auburn	Dekalb	Chevy Volt	2013	6. Customer Opt Out
344	Residential	Cedar Lake	Lake	Chevy Volt	2015	6. Customer Opt Out
345	Residential	Schererville	Lake	Tesla Model S	2015	6. Customer Opt Out
346	Residential	Chesterton	Porter	Tesla Model S	2014	6. Customer Opt Out
347	Residential	Valparaiso	Porter	Ford Fusion Energi	2013	6. Customer Opt Out
348	Residential	Cedar Lake	Lake	Ford C-Max Energi	2013	6. Customer Opt Out
349	Residential	Dyer	Lake	Chevy Volt	2017	6. Customer Opt Out
350	Residential	Valparaiso	Porter	n/a	n/a	7. Customer Not Qualified
351	Residential	Crown Point	Lake	Chevy Volt	2012	7. Customer Not Qualified
352	Residential	Munster	Lake	0	0	7. Customer Not Qualified
353	Residential	Elkhart	Elkhart	Ford C-Max Energi	2013	7. Customer Not Qualified
354	Residential	East Chicago	Lake	n/a	n/a	7. Customer Not Qualified
355	Residential	Crown Point	n/a	n/a	n/a	7. Customer Not Qualified
356	Residential	La Porte	La Porte	0	0	7. Customer Not Qualified
357	Residential	Omond Beach, FL	0	0	0	7. Customer Not Qualified
358	Residential	Mishawaka	St. Joseph	Tesla Model S	2013	7. Customer Not Qualified

Count	Type	City	County	Vehicle	Year	Program Status
359	Residential	Elkhart	Elkhart	Chevy Volt	2012	7. Customer Not Qualified
360	Residential	Churubusco	Whitley	Chevy Volt	2013	7. Customer Not Qualified
361	Residential	Valparaiso	Porter	Chevy Volt	2013	7. Customer Not Qualified
362	Residential	Fort Wayne	Allen	Nissan Leaf	2013	7. Customer Not Qualified
363	Residential	Fort Wayne	Allen	Nissan Leaf	2011	7. Customer Not Qualified
364	Residential	Indianapolis	Marion	Ford C-Max Energi	2013	7. Customer Not Qualified
365	Residential	Crown Point	Lake	Tesla Model S	2013	7. Customer Not Qualified
366	Residential	Crown Point	n/a	n/a	n/a	7. Customer Not Qualified
367	Residential	Fort Wayne	Allen	Tesla Model S	2014	7. Customer Not Qualified
368	Residential	Furlong PA	0	0	0	7. Customer Not Qualified
369	Residential	n/a	n/a	n/a	n/a	7. Customer Not Qualified
370	Residential	Mishawaka	St. Joseph	Chevy Volt	2014	7. Customer Not Qualified
371	Residential	0	0	n/a	n/a	7. Customer Not Qualified
372	Residential	Kokomo	Howard	n/a	n/a	7. Customer Not Qualified
373	Residential	Plymouth	Marshall	0	0	7. Customer Not Qualified
374	Residential	Pittsboro	Hendricks	0	0	7. Customer Not Qualified
375	Residential	Fort Wayne	Allen	Tesla Model S	2015	7. Customer Not Qualified
376	Residential	Bremen	Marshall	Cadillac ELR	2014	7. Customer Not Qualified
377	Residential	Elkhart	Elkhart	Chevy Volt	2012	7. Customer Not Qualified
378	Residential	Granger	St. Joseph	n/a	n/a	7. Customer Not Qualified
379	Residential	Fort Wayne	Allen	Chevy Volt	2013	7. Customer Not Qualified
380	Residential	Valparaiso	Porter	0	0	7. Customer Not Qualified
381	Residential	Schererville	Lake	Nissan Leaf	2016	7. Customer Not Qualified
382	Residential	South Bend	St. Joseph	Chevy Volt	2017	7. Customer Not Qualified

C. Approximate Location of Known Residential Plug-in Electric Vehicles in NIPSCO's Electric Service Territory



III. Residential Home Charging Station Installations:

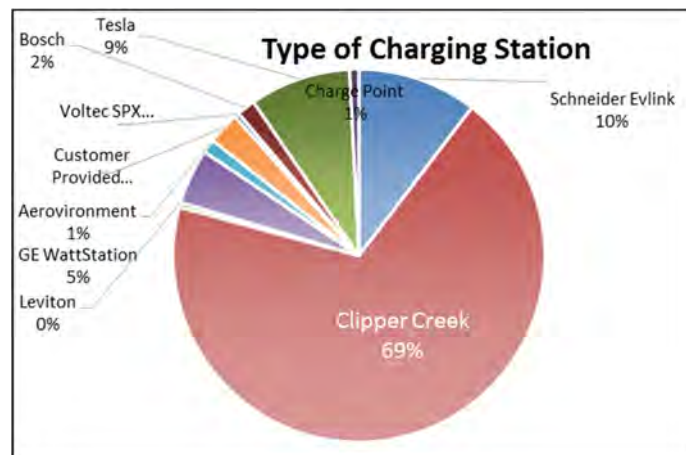
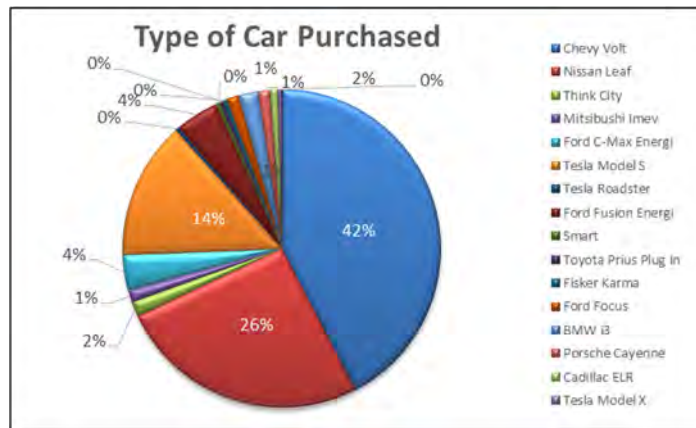
A. Summary

NIPSCO launched its *IN-Charge Electric Vehicle Program* – “At Home” to the public on April 2, 2012 with a focus on promoting the adoption of electric vehicles in the residential sector. During the third quarter of Program Year 5 (8/1/16 – 10/31/16), NIPSCO received no additional requests to enroll in the program, leaving the total requests at 382. In addition, no new residential home chargers have been installed during the third quarter of Program Year 5 leaving the total number of customers with completed installations at 250.

The table below provides a summary of the status of the 382 enrollment requests:

NIPSCO's IN-Charge Electric Vehicle Program - At Home Status Summary as of 10/31, 2016		
Meter Installation Process	Completed	250
	In Scheduling Process	0
Home Charger Installation Process	Completed & Waiting on Customer to Proceed	0
	In Scheduling Process	0
Site Survey Process	Survey Completed - Waiting on more info from customer	0
	In Scheduling Process	0
Enrollment Process	Waiting for Customer Response to Complete Online Survey	0
	Requested to be Recontacted at Later Date	1
	General Inquiry	9
	Decided Not to proceed	89
	Customer Not Qualified	33
	Waiting on NIPSCO	0
Total Requests to Enroll		382

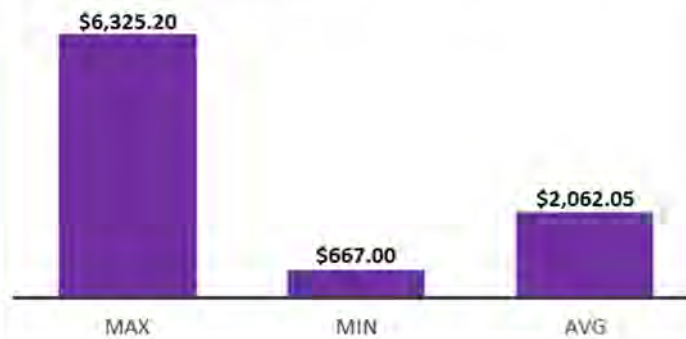
## B. Statistical Data for Completed Installations - As of October 31, 2016



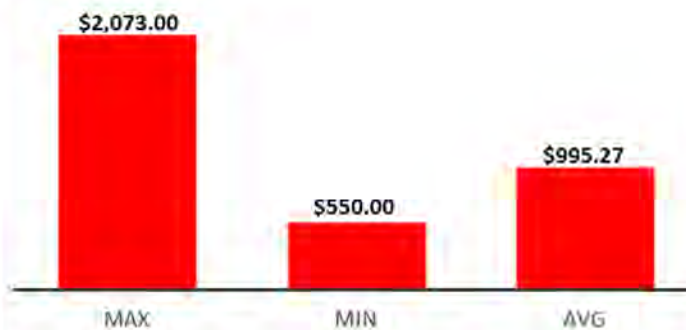
## VEHICLE OWNERSHIP

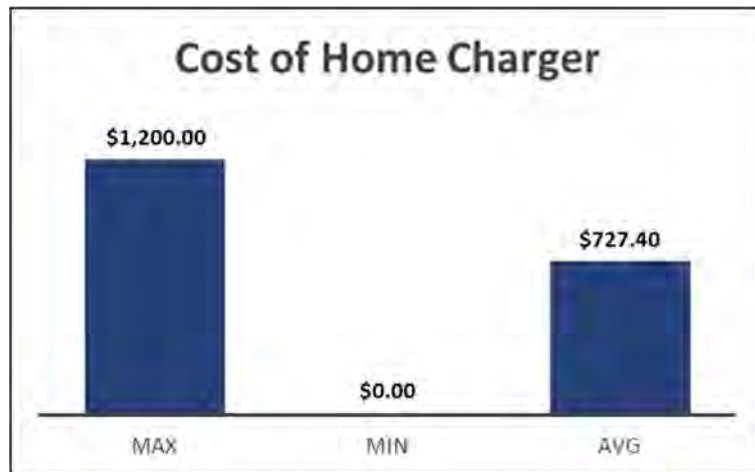


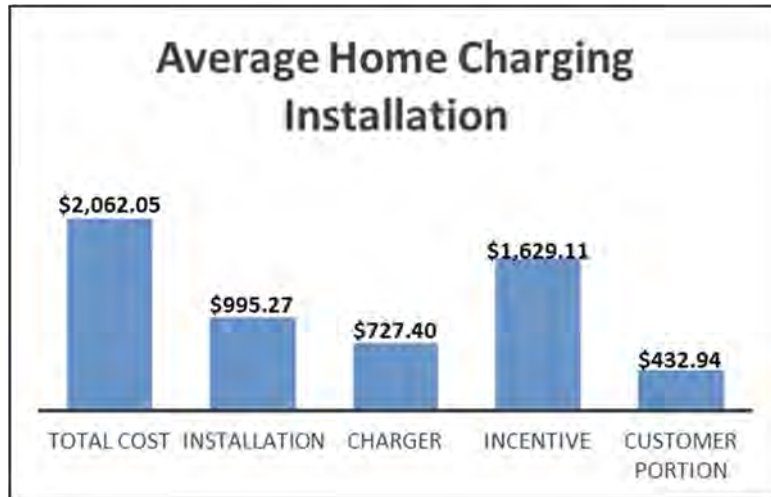
## Total Cost of Installation



## Installation Cost







**C. Location of Residential Home EV Charging Station Installations within NIPSCO's Electric Service Territory**

Count	Residential Home Charging Station Installation							Vehicle Profile		
	City	County	Type of Charger	Cost of Charger	Total Cost of Installation (Including Charger)	Incentive Applied	Net Customer Cost	Vehicle Owned or Purchased	Vehicle Replaced	Avg Miles Driven Per Day
1	Plymouth	Marshall	Schneider Evlink	\$799	\$1,668	\$1,650	\$18	Chevy Volt	Jaguar XF (2009)	60
2	Hobart	Lake	Clipper Creek	\$769	\$2,081	\$1,650	\$431	Think City	Mitsubishi Galant (1996)	30
3	St. John	Lake	Schneider Evlink	\$799	\$2,029	\$1,650	\$379	Think City	N/A	40
4	Hammond	Lake	Leviton	\$999	\$1,599	\$1,599	\$0	Nissan Leaf	Nissan Altima (2010)	55
5	La Porte	La Porte	Schneider Evlink	\$799	\$1,587	\$1,587	\$0	Mitsubishi Imev	Honda CRV (2000)	20
6	Valparaiso	Porter	Schneider Evlink	\$769	\$1,666	\$1,650	\$16	Chevy Volt	Saturn L300 (2002)	35
7	Westville	La Porte	Schneider Evlink	\$799	\$1,543	\$1,543	\$0	Chevy Volt	Dodge Caravan (1997)	30
8	Highland	Lake	Schneider Evlink	\$799	\$1,696	\$1,650	\$46	Chevy Volt	Camry Hybrid (2011)	50
9	Chesterton	Porter	Schneider Evlink	\$779	\$1,870	\$1,650	\$220	Think City	N/A	75
10	Crown Point	Lake	Schneider Evlink	\$799	\$1,527	\$1,527	\$0	Chevy Volt	Chevy Impala (2003)	40
11	Valparaiso	Porter	Clipper Creek	\$769	\$1,551	\$1,551	\$0	Chevy Volt	Lexus 430 (2004)	35
12	Valparaiso	Porter	Schneider Evlink	\$799	\$1,466	\$1,466	\$0	Nissan Leaf	Kia Sportage (1999)	135



Count	Residential Home Charging Station Installation							Vehicle Profile		
	City	County	Type of Charger	Cost of Charger	Total Cost of Installation (Including Charger)	Incentive Applied	Net Customer Cost	Vehicle Owned or Purchased	Vehicle Replaced	Avg Miles Driven Per Day
13	Valparaiso	Porter	Schneider Evlink	\$799	\$1,812	\$1,650	\$162	Chevy Volt	Chrysler Pacifica (2005)	60
14	Lowell	Lake	GE WattStation	\$999	\$2,113	\$1,650	\$463	Chevy Volt	Ford F150 (1995)	75
15	Crown Point	Lake	Clipper Creek	\$769	\$1,496	\$1,496	\$0	Mitsubishi Imev	Chevy pickup truck (1997)	20
16	Whiting	Lake	GE WattStation	\$999	\$1,896	\$1,650	\$246	Chevy Volt	VW Jetta (2008)	40
17	Lowell	Lake	Customer Provided	\$0	\$667	\$667	\$0	Nissan Leaf	N/A	30
18	Whiting	Lake	GE WattStation	\$1,069	\$2,091	\$1,650	\$441	Chevy Volt	Isuzu Trooper (1993)	40
19	Hebron	Porter	Clipper Creek	\$769	\$1,594	\$1,594	\$0	Chevy Volt	Chevy Impala (2007)	80
20	Valparaiso	Porter	Customer Provided	\$0	\$800	\$800	\$0	Chevy Volt	Ford Fusion Hybrid (2010)	30
21	St. John	Lake	Clipper Creek	\$769	\$1,763	\$1,650	\$113	Chevy Volt	Nissan Murano (2004)	33
22	Middlebury	Elkhart	GE WattStation	\$999	\$1,799	\$1,650	\$149	Chevy Volt	Chevy Traverse (2010)	20
23	Chesterton	Porter	GE WattStation	\$999	\$2,093	\$1,650	\$443	Chevy Volt	Volvo S70 (1998)	35
24	Valparaiso	Porter	Clipper Creek	\$769	\$1,909	\$1,650	\$259	Chevy Volt	Chevy Trailblazer SS	36
25	Syracuse	Kosciusko	Schneider Evlink	\$799	\$1,648	\$1,648	\$0	Nissan Leaf	N/A	40
26	Chesterton	Porter	Schneider Evlink	\$799	\$2,015	\$1,650	\$365	Think City	Mazda 3 (2005)	55
27	Valparaiso	Porter	Clipper Creek	\$769	\$1,823	\$1,650	\$173	Chevy Volt	Toyota FJ Cruiser (2010)	15
28	Munster	Lake	Aerovironment	\$0	\$1,070	\$1,070	\$0	Nissan Leaf	Chevy Impala (2000)	14
29	Goshen	Elkhart	Schneider Evlink	\$799	\$1,599	\$1,599	\$0	Nissan Leaf	N/A	25
30	Cedar Lake	Lake	Schneider Evlink	\$799	\$1,648	\$1,648	\$0	Chevy Volt	Chrysler Intrepid (2003)	40
31	Hammond	Lake	GE WattStation	\$999	\$1,799	\$1,650	\$149	Chevy Volt	2010 Chevy impala	100
32	Michigan City	La Porte	GE WattStation	\$999	\$2,134	\$1,650	\$484	Nissan Leaf	Chrysler Mini Van 2012	125
33	Bristol	Elkhart	Schneider Evlink	\$799	\$1,733	\$1,650	\$83	Chevy Volt	2006 Toyota Highlander Hybrid	50



Count	Residential Home Charging Station Installation							Vehicle Profile		
	City	County	Type of Charger	Cost of Charger	Total Cost of Installation (Including Charger)	Incentive Applied	Net Customer Cost	Vehicle Owned or Purchased	Vehicle Replaced	Avg Miles Driven Per Day
34	Valparaiso	Porter	Customer Provided	\$0	\$1,617	\$1,617	\$0	Tesla Model S	Infiniti G37X 2010	20
35	Munster	Lake	Clipper Creek	\$769	\$2,029	\$1,650	\$379	Chevy Volt	Pontiac Grand Prix GTP 1997	20
36	Chesterton	Porter	Clipper Creek	\$769	\$1,619	\$1,619	\$0	Chevy Volt	Buick Lucerne 2009	45
37	Union Mills	La Porte	Clipper Creek	\$999	\$1,799	\$1,650	\$149	Nissan Leaf	Ford F150	54
38	Munster	Lake	GE WattStation	\$999	\$1,922	\$1,650	\$272	Chevy Volt	N/A	75
39	Dyer	Lake	Clipper Creek	\$769	\$1,941	\$1,650	\$291	Chevy Volt	2008 Honda Civic	70
40	Demotte	Jasper	Clipper Creek	\$769	\$1,729	\$1,650	\$79	Chevy Volt	Chevrolet Avalanche 2005	34
41	Valparaiso	Porter	Schneider Evlink	\$799	\$2,097	\$1,650	\$447	Chevy Volt	Hummer	24
42	Valparaiso	Porter	Clipper Creek	\$769	\$1,729	\$1,650	\$79	Chevy Volt	Nissan Altima (2002)	50
43	Bremen	Marshall	GE WattStation	\$999	\$2,143	\$1,650	\$493	Nissan Leaf	Ford Fusion SEL 2010	50
44	Hebron	Porter	Clipper Creek	\$769	\$1,650	\$1,650	\$0	Nissan Leaf	2011 Hyundai Sonata	35
45	Middlebury	Elkhart	Clipper Creek	\$769	\$1,838	\$1,650	\$188	Chevy Volt	2010 Ford Expedition EL	45
46	St. John	Lake	Schneider Evlink	\$799	\$1,846	\$1,650	\$196	Chevy Volt	Chevy HHR 2006	40
47	Dyer	Lake	Schneider Evlink	\$799	\$1,733	\$1,650	\$83	Nissan Leaf	2006 Honda Civic	55
48	Valparaiso	Porter	GE WattStation	\$999	\$1,649	\$1,649	\$0	Chevy Volt	Chrysler, 300M Special, 2004	40
49	Goshen	Elkhart	GE WattStation	\$999	\$2,216	\$1,650	\$566	Chevy Volt	Ford Fiesta 2011	30
50	Cedar Lake	Lake	Clipper Creek	\$769	\$1,703	\$1,650	\$53	Nissan Leaf	1996 Saturn sl2	60
51	Crown Point	Lake	GE WattStation	\$799	\$1,896	\$1,650	\$246	Chevy Volt	Toyota Sienna 2002	35
52	Warsaw	Kosciusko	Clipper Creek	\$769	\$1,753	\$1,650	\$103	Chevy Volt	Chrysler PT Cruiser 2001	20
53	Hammond	Lake	Schneider Evlink	\$799	\$2,053	\$1,650	\$403	Nissan Leaf	N/A	30
54	Valparaiso	Porter	Schneider Evlink	\$799	\$1,832	\$1,650	\$182	Chevy Volt	GMC Yukon	50
55	Goshen	Elkhart	Clipper Creek	\$769	\$1,569	\$1,569	\$0	Ford C-Max Energi	Chevy Equinox	60
56	La Porte	La Porte	Schneider Evlink	\$799	\$1,831	\$1,650	\$181	Chevy Volt	Nissan Altima	35

Count	Residential Home Charging Station Installation							Vehicle Profile		
	City	County	Type of Charger	Cost of Charger	Total Cost of Installation (Including Charger)	Incentive Applied	Net Customer Cost	Vehicle Owned or Purchased	Vehicle Replaced	Avg Miles Driven Per Day
57	Hobart	Lake	Clipper Creek	\$769	\$1,749	\$1,650	\$99	Chevy Volt	Jeep Grand Cherokee	40
58	Munster	Lake	Clipper Creek	\$769	\$2,152	\$1,650	\$502	Nissan Leaf	Ford Taurus 2003	15
59	Crown Point	Lake	Clipper Creek	\$769	\$2,215	\$1,650	\$565	Chevy Volt	Saturn Vue 2006	27
60	Westville	La Porte	Clipper Creek	\$769	\$1,788	\$1,650	\$138	Chevy Volt	Trailblazer	40
61	Dyer	Lake	Customer Provided	\$0	\$2,107	\$1,650	\$457	Tesla Model S	BMW X5 2008	175
62	Crown Point	Lake	Clipper Creek	\$769	\$1,875	\$1,650	\$225	Ford Fusion Energi	toyota solara 1999	30
63	St. John	Lake	Clipper Creek	\$769	\$1,650	\$1,650	\$0	Chevy Volt	N/A	25-30
64	Griffith	Lake	Clipper Creek	\$769	\$1,650	\$1,650	\$0	Nissan Leaf	LEXUS GS350 2007	50
65	Hobart	Lake	Clipper Creek	\$769	\$1,827	\$1,650	\$177	Nissan Leaf	N/A	40-50
66	Portage	Porter	Clipper Creek	\$769	\$1,650	\$1,650	\$0	Nissan Leaf	Lincoln LS 2004	45
67	Dyer	Lake	Clipper Creek	\$769	\$2,079	\$1,650	\$429	Nissan Leaf	Nissan Titan 2004	40
68	Cedar Lake	Lake	Clipper Creek	\$769	\$1,877	\$1,650	\$227	Chevy Volt	Chevy Avalanche 2013	90
69	Schererville	Lake	Customer Provided	\$0	\$3,481	\$1,650	\$1,831	Tesla Model S	Bentley Gtc 2008	40
70	Dyer	Lake	Clipper Creek	\$769	\$1,800	\$1,650	\$150	Nissan Leaf	Pontiac Grand Prix 2005	60
71	Howe	LaGrange	Clipper Creek	\$769	\$1,913	\$1,650	\$263	Ford Fusion Energi	Ford Fusion Hybrid 2013	45
72	Hlghland	Lake	Clipper Creek	\$769	\$2,018	\$1,650	\$368	Nissan Leaf	FORD RANGER 1996	50
73	Dyer	Lake	Clipper Creek	\$769	\$2,041	\$1,650	\$391	Nissan Leaf	Chevy Malibu 2009	40
74	Merrillville	Lake	Clipper Creek	\$769	\$1,929	\$1,650	\$279	Chevy Volt	Nisan Ultima 2010	50
75	Plymouth	Marshall	Clipper Creek	\$769	\$1,963	\$1,650	\$313	Ford C-Max Energi	Ford C-Max Energi 2013	40
76	Valparaiso	Porter	Clipper Creek	\$769	\$1,650	\$1,650	\$0	Nissan Leaf	Nissan Murano 2007	20
77	Dyer	Lake	Clipper Creek	\$769	\$2,456	\$1,650	\$806	Chevy Volt	Acura TL 2007	35
78	Portage	Porter	Clipper Creek	\$769	\$2,053	\$1,650	\$403	Chevy Volt	Chrysler Pacifica 2005	25
79	Goshen	Elkhart	Clipper Creek	\$769	\$2,028	\$1,650	\$378	Nissan Leaf	Honda Accord 2013	30

Count	Residential Home Charging Station Installation							Vehicle Profile		
	City	County	Type of Charger	Cost of Charger	Total Cost of Installation (Including Charger)	Incentive Applied	Net Customer Cost	Vehicle Owned or Purchased	Vehicle Replaced	Avg Miles Driven Per Day
80	Crown Point	Lake	Clipper Creek	\$769	\$2,016	\$1,650	\$366	Chevy Volt	Scion TC 2006	30
81	Hobart	Lake	Clipper Creek	\$769	\$2,086	\$1,650	\$436	Chevy Volt	Nissan Altima 2012	40
82	Hlghland	Lake	Clipper Creek	\$769	\$2,184	\$1,650	\$534	Ford Fusion Energi	Ford Fusion 2010	10
83	Hammond	Lake	Clipper Creek	\$769	\$1,650	\$1,650	\$0	Nissan Leaf	Ford Escape 2003	20
84	Schererville	Lake	Clipper Creek	\$769	\$2,072	\$1,650	\$422	Chevy Volt	Buick La Crosse 2011	35
85	Valparaiso	Porter	Clipper Creek	\$769	\$1,947	\$1,650	\$297	Chevy Volt	Acura tsx 2012	40
86	Munster	Lake	Clipper Creek	\$769	\$2,203	\$1,650	\$553	Chevy Volt	Saturn SL 2002	52
87	Dyer	Lake	Clipper Creek	\$769	\$1,953	\$1,650	\$303	Chevy Volt	Cadillac Escalade 2004	36
88	Crown Point	Lake	Customer Provided	\$0	\$5,153	\$1,650	\$3,503	Tesla Roadster	Honda S2000	30
89	Merrillville	Lake	Clipper Creek	\$769	\$1,853	\$1,650	\$203	Chevy Volt	N/A	35
90	Crown Point	Lake	Clipper Creek	\$769	\$1,978	\$1,650	\$328	Chevy Volt	Toyota Rav4 2003	50
91	Portage	Porter	Clipper Creek	\$769	\$2,359	\$1,650	\$709	Chevy Volt	Mercury Cougar 1996	15
92	Goshen	Elkhart	Clipper Creek	\$769	\$2,101	\$1,650	\$451	Nissan Leaf	Hyundai Santa Fe 2008	30
93	Chesterton	Porter	Clipper Creek	\$769	\$2,215	\$1,650	\$565	Tesla Model S	2011 BMW x6	40
94	Crown Point	Lake	Clipper Creek	\$769	\$1,650	\$1,650	\$0	Chevy Volt	Jeep Commander 2007	100
95	Crown Point	Lake	Clipper Creek	\$0	\$1,564	\$1,564	\$0	Nissan Leaf	Audi a4 2011	45
96	Griffith	Lake	Clipper Creek	\$769	\$1,978	\$1,650	\$328	Nissan Leaf	Suzuki Swift 1996	40
97	Hammond	Lake	Clipper Creek	\$769	\$2,591	\$1,650	\$941	Nissan Leaf	Toyota Prius 2008	60
98	La Porte	La Porte	Clipper Creek	\$769	\$2,366	\$1,650	\$716	Chevy Volt	Chevrolet Malibu 2012	15
99	Hobart	Lake	Clipper Creek	\$769	\$2,072	\$1,650	\$422	Ford C-Max Energi	SCION XB 2009	32
100	Munster	Lake	Clipper Creek	\$769	\$1,938	\$1,650	\$288	Tesla Model S	Toyota Highlander Hybrid 2007	70
101	Warsaw	Kosciusko	Clipper Creek	\$769	\$2,094	\$1,650	\$444	Chevy Volt	Chevrolet Cavalier 1999	33
102	Lowell	Lake	Clipper Creek	\$769	\$2,267	\$1,650	\$617	Chevy Volt	Ford Taurus 2002	35

Count	Residential Home Charging Station Installation							Vehicle Profile		
	City	County	Type of Charger	Cost of Charger	Total Cost of Installation (Including Charger)	Incentive Applied	Net Customer Cost	Vehicle Owned or Purchased	Vehicle Replaced	Avg Miles Driven Per Day
103	Chesterton	Porter	Clipper Creek	\$769	\$2,103	\$1,650	\$453	Tesla Model S	Audi A6 2010	50
104	Goshen	Elkhart	Clipper Creek	\$769	\$1,803	\$1,650	\$153	Tesla Model S	Cadillac CTS 2009	61
105	Goshen	Elkhart	Clipper Creek	\$769	\$2,248	\$1,650	\$598	Ford C-Max Energi	Honda Civic 1997	75
106	Cedar Lake	Lake	Clipper Creek	\$769	\$2,063	\$1,650	\$413	Nissan Leaf	Chevy Blazer 2000	45
107	Demotte	Jasper	Schneider Evlink	\$769	\$2,182	\$1,650	\$532	Nissan Leaf	Saturn Vue 2004	75
108	Crown Point	Lake	Clipper Creek	\$769	\$1,847	\$1,650	\$197	Chevy Volt	Ford F-150 2003	60
109	Goshen	Elkhart	Clipper Creek	\$769	\$1,803	\$1,650	\$153	Nissan Leaf	Honda Accord 2004	50
110	Warsaw	Kosciusko	Tesla	\$1,200	\$2,659	\$1,650	\$1,009	Tesla Model S	Lexus 460 LS 2007	50
111	Valparaiso	Porter	Clipper Creek	\$769	\$1,854	\$1,650	\$204	Toyota Prius Plug In	Acura TL 2007	100
112	Schererville	Lake	Clipper Creek	\$769	\$2,016	\$1,650	\$366	Nissan Leaf	Honda Civit 2003	60
113	Shelby	Lake	Clipper Creek	\$769	\$1,903	\$1,650	\$253	Chevy Volt	unknown	30
114	Valparaiso	Porter	Voltec SPX	\$0	\$1,641	\$1,641	\$0	Chevy Volt	Mazda 6 2005	100
115	Hobart	Lake	Clipper Creek	\$769	\$1,928	\$1,650	\$278	Nissan Leaf	Chevy Suburban 2005	40
116	Hobart	Lake	Clipper Creek	\$769	\$1,650	\$1,650	\$0	Nissan Leaf	N/A	80
117	Schererville	Lake	Clipper Creek	\$769	\$2,215	\$1,650	\$565	Ford Fusion Energi	Hyundai Azera 2008	20
118	Crown Point	Lake	Customer Provided	\$1,200	\$3,050	\$1,650	\$1,400	Tesla Model S	BMW 535i 2012	60
119	Gary	Lake	Clipper Creek	\$100	\$1,803	\$1,650	\$153	Chevy Volt	G6 Pontiac 2009	60
120	Valparaiso	Porter	Clipper Creek	\$769	\$2,203	\$1,650	\$553	Chevy Volt	Toyota Prius 2010	40
121	Griffith	Lake	Clipper Creek	\$225	\$1,928	\$1,650	\$278	Chevy Volt	Ford Crown Victoria 2005	40
122	Michiana Shores	La Porte	Schneider Evlink	\$1,200	\$3,092	\$1,650	\$1,442	Tesla Model S	BMW 328xi 2009	40
123	Lowell	Lake	Clipper Creek	\$769	\$1,859	\$1,650	\$209	Nissan Leaf	Chevy Trailblazer 2008	55
124	Valparaiso	Porter	Tesla	\$1,200	\$3,285	\$1,650	\$1,635	Tesla Model S	Jeep Sahara 2012	80
125	Hebron	Porter	Clipper Creek	\$769	\$2,253	\$1,650	\$603	Ford Fusion Energi	Mazda 6 2004	65

Count	Residential Home Charging Station Installation							Vehicle Profile		
	City	County	Type of Charger	Cost of Charger	Total Cost of Installation (Including Charger)	Incentive Applied	Net Customer Cost	Vehicle Owned or Purchased	Vehicle Replaced	Avg Miles Driven Per Day
126	Munster	Lake	Tesla	\$1,200	\$3,742	\$1,650	\$2,092	Tesla Model S	GMC Acadia 2008	55
127	Merrillville	Lake	Schneider Evlink	\$999	\$2,616	\$1,650	\$966	Nissan Leaf	suzuki Kasashi 2013	25
128	Mentone	Kosciusko	Clipper Creek	\$769	\$1,650	\$1,650	\$0	Chevy Volt	cadillac STS-V 2006	45
129	Mentone	Kosciusko	Clipper Creek	\$925	\$1,650	\$1,650	\$0	Fisker Karma	cadillac CTS-V 2012	10
130	Schererville	Lake	Clipper Creek	\$925	\$2,003	\$1,650	\$353	Ford Focus	FORD FOCUS 2012	21
131	Highland	Lake	Schneider Evlink	\$0	\$1,865	\$1,650	\$215	Nissan Leaf	toyota prius 2007	50
132	Valparaiso	Porter	Tesla	\$1,200	\$4,138	\$1,650	\$2,488	Tesla Model S	Jaguar XF 2011	35
133	Valparaiso	Porter	Clipper Creek	\$769	\$2,297	\$1,650	\$647	Ford C-Max Energi	Chevy Malibu 2010	20
134	Monticello	White	Clipper Creek	\$769	\$2,384	\$1,650	\$734	Chevy Volt	Saturn Aura 2007	50
135	Portage	Porter	Clipper Creek	\$769	\$1,928	\$1,650	\$278	Tesla Model S	Cadillac STS 2008	50
136	Chesterton	Porter	Clipper Creek	\$769	\$1,969	\$1,650	\$319	Chevy Volt	Ford F150 2002	30
137	Schererville	Lake	Clipper Creek	\$769	\$2,236	\$1,650	\$586	Chevy Volt	Chevy Traverse 2012	15
138	Plymouth	Marshall	Clipper Creek	\$769	\$2,253	\$1,650	\$603	Chevy Volt	Ford F250 2005	40
139	Gary	Lake	Clipper Creek	\$769	\$2,053	\$1,650	\$403	Nissan Leaf	Chevy Silverado 1986	40
140	Goshen	Elkhart	Clipper Creek	\$769	\$1,928	\$1,650	\$278	Nissan Leaf	Nissan Murano 2012	100
141	Valparaiso	Porter	Clipper Creek	\$769	\$2,278	\$1,650	\$628	Chevy Volt	Chevrolet Malibu Is 2005	50
142	Westville	La Porte	Clipper Creek	\$769	\$2,451	\$1,650	\$801	Chevy Volt	BMW 328XI 2011	50
143	Schererville	Lake	Clipper Creek	\$769	\$1,884	\$1,650	\$234	Tesla Model S	Chevy Blazer 2001	30
144	Goshen	Elkhart	Clipper Creek	\$769	\$1,959	\$1,650	\$309	Chevy Volt	Kia Sephia 1999	20
145	Goshen	Elkhart	Clipper Creek	\$769	\$2,686	\$1,650	\$1,036	Chevy Volt	Saturn SW-1 1998	50
146	Portage	Porter	Clipper Creek	\$0	\$1,634	\$1,634	\$0	Chevy Volt	Mazda 3 2011	70
147	Schererville	Lake	Tesla	\$1,200	\$2,909	\$1,650	\$1,259	Tesla Model S	Ford F150 2006	30
148	Goshen	Elkhart	Clipper Creek	\$769	\$1,828	\$1,650	\$178	Chevy Volt	Subaru Impreza 2000	96

Count	Residential Home Charging Station Installation							Vehicle Profile		
	City	County	Type of Charger	Cost of Charger	Total Cost of Installation (Including Charger)	Incentive Applied	Net Customer Cost	Vehicle Owned or Purchased	Vehicle Replaced	Avg Miles Driven Per Day
149	Valparaiso	Porter	Clipper Creek	\$769	\$1,953	\$1,650	\$303	Ford Fusion Energi	Ford Explorer 2006	50
150	Portage	Porter	Clipper Creek	\$769	\$2,053	\$1,650	\$403	Chevy Volt	Buick Lesabre 2003	90
151	Chesterton	Porter	Schneider Evlink	\$799	\$2,054	\$1,650	\$404	Nissan Leaf	Toyota Tacoma 2004	70
152	Munster	Lake	Clipper Creek	\$769	\$2,144	\$1,650	\$494	Chevy Volt	Toyota Yaris 2009	36
153	Goshen	Elkhart	Clipper Creek	\$769	\$1,828	\$1,650	\$178	Chevy Volt	Subaru Impreza 2000	96
154	Portage	Porter	Clipper Creek	\$769	\$1,953	\$1,650	\$303	Chevy Volt	Chevrolet HHR 2009	100
155	Schererville	Lake	Tesla	\$750	\$2,767	\$1,650	\$1,117	Tesla Model S	Mercedes CLK320 2002	16
156	Gary	Lake	Clipper Creek	\$769	\$1,828	\$1,650	\$178	Nissan Leaf	Toyota Camry 1998	140
157	La Porte	La Porte	Clipper Creek	\$769	\$1,953	\$1,650	\$303	Nissan Leaf	Chevrolet Coblt 7	70
158	Gary	Lake	Clipper Creek	\$769	\$2,028	\$1,650	\$378	BMW i3	BMW 528 2008	80
159	Portage	Porter	Clipper Creek	\$769	\$2,170	\$1,650	\$520	Chevy Volt	Toyota Prius 2008	30
160	Schererville	Lake	Tesla	\$750	\$3,873	\$1,650	\$2,223	Tesla Model S	Lexus ES350 2011	100
161	Mt. Ayr	Newton	Bosch	\$0	\$1,509	\$1,509	\$0	Chevy Volt	Chevy Blazer 2002	150
162	Dyer	Lake	Clipper Creek	\$769	\$1,903	\$1,650	\$253	Chevy Volt	Toyota Prius 2007	40
163	La Porte	La Porte	Tesla	\$750	\$2,359	\$1,650	\$709	Tesla Model S	Honda Acord 2012	44
164	Merrillville	Lake	Clipper Creek	\$769	\$1,828	\$1,650	\$178	Nissan Leaf	n/a	40
165	Valparaiso	Porter	Clipper Creek	\$769	\$2,063	\$1,650	\$413	Chevy Volt	Kia Forte 2012	35
166	Valparaiso	Porter	Clipper Creek	\$769	\$1,828	\$1,650	\$178	Chevy Volt	Cadillac CTS 2013	40
167	Valparaiso	Porter	Clipper Creek	\$769	\$1,953	\$1,650	\$303	Chevy Volt	Pontiac Torrent 2006	40
168	Portage	Porter	Clipper Creek	\$769	\$1,953	\$1,650	\$303	Chevy Volt	Infinity M35x 2006	70
169	Valparaiso	Porter	Clipper Creek	\$769	\$2,151	\$1,650	\$501	Ford Fusion Energi	Nissan Quest 2007	50
170	Crown Point	Lake	Bosch	\$0	\$1,590	\$1,590	\$0	BMW i3	CHEVY VOLT 2012	64
171	Chesterton	Porter	Clipper Creek	\$769	\$1,828	\$1,650	\$178	Chevy Volt	Chrysler Pacifica 2004	60

Count	Residential Home Charging Station Installation							Vehicle Profile		
	City	County	Type of Charger	Cost of Charger	Total Cost of Installation (Including Charger)	Incentive Applied	Net Customer Cost	Vehicle Owned or Purchased	Vehicle Replaced	Avg Miles Driven Per Day
172	Chesterton	Porter	Tesla	\$0	\$3,967	\$1,650	\$2,317	Tesla Model S	Cadillac SRX 2011	100
173	Valparaiso	Porter	Clipper Creek	\$769	\$1,953	\$1,650	\$303	Nissan Leaf	Mazda Protege 2002	22
174	Crown Point	Lake	Clipper Creek	\$769	\$1,828	\$1,650	\$178	Chevy Volt	Mitubishi 3000gt 1996	35
175	Valparaiso	Porter	Clipper Creek	\$769	\$1,828	\$1,650	\$178	Ford C-Max Energi	Chevy Trailblazer 2007	40
176	St. John	Lake	Clipper Creek	\$769	\$1,903	\$1,650	\$253	Chevy Volt	Hyundai Sonata 2011	70
177	Crown Point	Lake	Clipper Creek	\$769	\$2,247	\$1,650	\$597	Chevy Volt	Toyota Prius 2009	20
178	Munster	Lake	Clipper Creek	\$769	\$1,978	\$1,650	\$328	Nissan Leaf	Toyota Prius 2010	20
179	Long Beach	La Porte	Clipper Creek	\$769	\$1,878	\$1,650	\$228	Ford C-Max Energi	Mercury Mariner 2006	100
180	Chesterton	Porter	Clipper Creek	\$769	\$2,003	\$1,650	\$353	BMW i3	BMW X5 2004	30
181	St. John	Lake	Tesla	\$0	\$1,515	\$1,515	\$0	Tesla Model S	BMW X5 2008	20
182	St. John	Lake	Aerovironment	\$0	\$1,447	\$1,447	\$0	Nissan Leaf	Dodge 1500 7	20
183	St. John	Lake	Tesla	\$0	\$2,059	\$1,650	\$409	Tesla Model S	BMW 750i 2014	20
184	Warsaw	Kosciusko	Tesla	\$750	\$2,700	\$1,650	\$1,050	Tesla Model S	Chevy Impala 2009	80
185	Dyer	Lake	Bosch	\$0	\$1,575	\$1,575	\$0	Chevy Volt	Honda Accord 2006	150
186	Gary	Lake	Clipper Creek	\$769	\$1,828	\$1,650	\$178	Chevy Volt	2006 Toyota Priu	60
187	Dyer	Lake	Tesla	\$0	\$1,923	\$1,650	\$273	Tesla Model S	Land Rover Ir2 2008	100
188	Munster	Lake	Clipper Creek	\$769	\$1,978	\$1,650	\$328	Chevy Volt	Chrysler Sebring 2015	40
189	Valparaiso	Porter	Clipper Creek	\$769	\$2,009	\$1,650	\$359	Chevy Volt	Honda Civic 2007	60
190	Goshen	Elkhart	Clipper Creek	\$769	\$2,329	\$1,650	\$679	Chevy Volt	chevrolet HHR 2006	45
191	Bremen	Marshall	Clipper Creek	\$769	\$1,903	\$1,650	\$253	Chevy Volt	ford explorer 2007	50
192	Valparaiso	Porter	Tesla	\$750	\$2,475	\$1,650	\$825	Tesla Model S	Mazda CR9 2010	50
193	Munster	Lake	Tesla	\$750	\$2,475	\$1,650	\$825	Tesla Model S	Jaguar XJL 2013	100
194	Valparaiso	Porter	Tesla	\$0	\$1,384	\$1,384	\$0	Tesla Model S	n/a	70

Count	Residential Home Charging Station Installation							Vehicle Profile		
	City	County	Type of Charger	Cost of Charger	Total Cost of Installation (Including Charger)	Incentive Applied	Net Customer Cost	Vehicle Owned or Purchased	Vehicle Replaced	Avg Miles Driven Per Day
195	Goshen	Elkhart	Clipper Creek	\$769	\$1,903	\$1,650	\$253	Chevy Volt	Honda Civic 2002	40
196	Michigan City	La Porte	Tesla	\$750	\$2,614	\$1,650	\$964	Tesla Model S	Toyota Highlander 2009	145
197	Crown Point	Lake	Aerovironment	\$0	\$1,435	\$1,435	\$0	Chevy Volt	Ford taurus 2002	40
198	Portage	Porter	Clipper Creek	\$925	\$2,050	\$1,650	\$400	Nissan Leaf	Toyota Corolla 2007	51
199	Hobart	Lake	Clipper Creek	\$769	\$1,928	\$1,650	\$278	Chevy Volt	Chrysler Town & Country 2004	100
200	Crown Point	Lake	Clipper Creek	\$769	\$1,828	\$1,650	\$178	Nissan Leaf	Jeep Grand Cherokee 2000	50
201	Schererville	Lake	Tesla	\$750	\$2,725	\$1,650	\$1,075	Tesla Model S	Ford Focus 2009	100
202	Highland	Lake	Clipper Creek	\$0	\$1,184	\$1,184	\$0	Chevy Volt	Ford Fusion 2013	52
203	Crown Point	Lake	Clipper Creek	\$769	\$1,941	\$1,650	\$291	Chevy Volt	BMW 528i 2000	55
204	New Paris	Elkhart	Clipper Creek	\$769	\$2,224	\$1,650	\$574	Nissan Leaf	Dodge Shadow 1993	40
205	North Liberty	St. Joseph	Clipper Creek	\$769	\$3,389	\$1,650	\$1,739	Ford Fusion Energi	Ford Fusion Hybrid 2013	40
206	Monticello	White	Clipper Creek	\$769	\$1,650	\$1,650	\$0	Chevy Volt	Cadillac Deville 1997	25
207	Lowell	Lake	Clipper Creek	\$769	\$2,103	\$1,650	\$453	Chevy Volt	Chevy Impala 2003	25
208	Culver	Marshall	Clipper Creek	\$769	\$2,184	\$1,650	\$534	Chevy Volt	Buick Lacrosse 2005	65
209	Lowell	Lake	Clipper Creek	\$769	\$1,828	\$1,650	\$178	Chevy Volt	Ford Fiesta 2011	50
210	Chesterton	Porter	Clipper Creek	\$769	\$2,224	\$1,650	\$574	Nissan Leaf	Nissan Pathfinder 2000	50
211	Angola	Steuben	Clipper Creek	\$769	\$2,003	\$1,650	\$353	Nissan Leaf	Chevy Aveo 2005	10
212	Valparaiso	Porter	Clipper Creek	\$769	\$1,828	\$1,650	\$178	Nissan Leaf	Chevrolet Malibu 1999	25
213	Crown Point	Lake	Clipper Creek	\$769	\$2,091	\$1,650	\$441	Ford C-Max Energi	Toyota Camry 2015	30
214	Valparaiso	Porter	Tesla	\$750	\$6,325	\$1,650	\$4,675	Tesla Model S	Subaru Outback 2010	100
215	Hobart	Lake	Clipper Creek	\$769	\$1,828	\$1,650	\$178	Ford Fusion Energi	FORD FUSION HYBRID 2010	40
216	Valparaiso	Porter	Clipper Creek	\$925	\$2,159	\$1,650	\$509	Nissan Leaf	Chevy Cobalt 2010	35



Count	Residential Home Charging Station Installation							Vehicle Profile		
	City	County	Type of Charger	Cost of Charger	Total Cost of Installation (Including Charger)	Incentive Applied	Net Customer Cost	Vehicle Owned or Purchased	Vehicle Replaced	Avg Miles Driven Per Day
217	Gary	Lake	Tesla	\$769	\$2,128	\$1,650	\$478	Nissan Leaf	Chevy Colorado 2005	60
218	Monticello	White	Clipper Creek	\$750	\$2,459	\$1,650	\$809	Tesla Model S	Jeep Cherokee 2014	35
219	Warsaw	Kosciusko	Clipper Creek	\$925	\$2,709	\$1,650	\$1,059	Nissan Leaf	Nissan Leaf 2015	30 to 50
220	Griffith	Lake	Clipper Creek	\$769	\$2,467	\$1,650	\$817	Nissan Leaf	Jeep Comander 2006	15
221	Portage	Porter	Clipper Creek	\$769	\$1,703	\$1,650	\$53	Nissan Leaf	Jeep Wrangler 1997	10
222	Goshen	Elkhart	Clipper Creek	\$769	\$2,165	\$1,650	\$515	Tesla Model S	BMW 535iX 2014	100
223	Valparaiso	Porter	Clipper Creek	\$925	\$2,644	\$1,650	\$994	BMW i3	Mini JCW 2012	25-40
224	Cedar Lake	Lake	Clipper Creek	\$769	\$1,904	\$1,650	\$254	Nissan Leaf	Ford Ranger 1999	25
225	Goshen	Elkhart	Clipper Creek	\$769	\$2,053	\$1,650	\$403	Ford Focus	Toyota Corolla 2006	30
226	Highland	Lake	Clipper Creek	\$769	\$2,548	\$1,650	\$898	Ford C-Max Energi	Ford Fiesta 2012	15
227	Valparaiso	Porter	Clipper Creek	\$769	\$1,828	\$1,650	\$178	Chevy Volt	VW Passat 2000	45
228	Valparaiso	Porter	Clipper Creek	\$769	\$1,828	\$1,650	\$178	Chevy Volt	Mazda 6 2007	33
229	Cedar Lake	Lake	Clipper Creek	\$769	\$2,053	\$1,650	\$403	Mitsubishi Imev	Dodge Neon 2005	30
230	Goshen	Elkhart	Clipper Creek	\$925	\$2,284	\$1,650	\$634	Nissan Leaf	Toyota Prius 2004	20
231	Highland	Lake	Clipper Creek	\$925	\$2,415	\$1,650	\$765	BMW i3	Volvo s40 2005	50
232	Valparaiso	Porter	Clipper Creek	\$769	\$1,828	\$1,650	\$178	Ford Fusion Energi	Ford F-150 2013	60
233	Valparaiso	Porter	Clipper Creek	\$750	\$2,259	\$1,650	\$609	Tesla Model S	BMW 535xi 2011	25
234	St. John	Lake	Tesla	\$925	\$2,567	\$1,650	\$917	Nissan Leaf	BMW 330i 2004	30
235	Crown Point	Lake	Clipper Creek	\$0	\$1,550	\$1,550	\$0	Cadillac ELR	Lexus GS300 2006	70
236	Dyer	Lake	Bosch	\$769	\$1,978	\$1,650	\$328	Ford Fusion Energi	Ford Expedition 2003	90
237	Valparaiso	Porter	Clipper Creek	\$769	\$1,978	\$1,650	\$328	Nissan Leaf	Volkswagon Jetta 2009	12
238	Valparaiso	Porter	Clipper Creek	\$0	\$2,132	\$1,650	\$482	Tesla Model S	BMW 750Li 2005	100
239	Valparaiso	Porter	Tesla	\$925	\$2,209	\$1,650	\$559	Cadillac ELR	BMW X5 2003	30

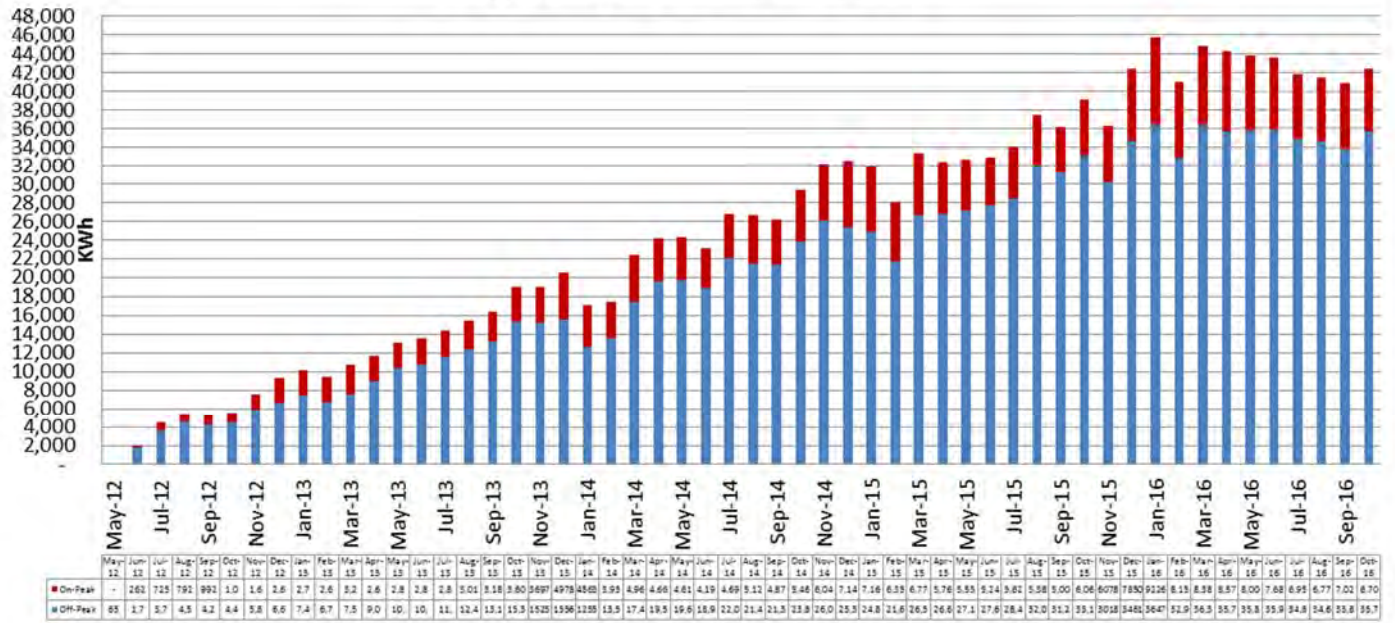
Count	Residential Home Charging Station Installation							Vehicle Profile		
	City	County	Type of Charger	Cost of Charger	Total Cost of Installation (Including Charger)	Incentive Applied	Net Customer Cost	Vehicle Owned or Purchased	Vehicle Replaced	Avg Miles Driven Per Day
240	Chesterton	Porter	Charge Point	\$925	\$2,496	\$1,650	\$846	Porsche Cayenne	n/a	75
241	St. John	Lake	Clipper Creek	\$925	\$3,459	\$1,650	\$1,809	Porsche Cayenne	BMW 528i 2013	50
242	Dyer	Lake	Clipper Creek	\$925	\$2,209	\$1,650	\$559	Nissan Leaf	Pontiac G6 2007	20
243	Goshen	Elkhart	Charge Point	\$769	\$2,003	\$1,650	\$353	Nissan Leaf	Honda Civic 2005	8
244	La Porte	La Porte	Clipper Creek	\$750	\$2,473	\$1,650	\$823	Tesla Model X	Hummer H2 2005	100
245	Schererville	Lake	Clipper Creek	\$925	\$2,284	\$1,650	\$634	Porsche Cayenne	BMW 550 X drive 2014	15
246	Portage	Porter	Clipper Creek	\$769	\$1,884	\$1,650	\$234	Ford Focus	Honda Insight 200	45
247	Goshen	Elkhart	Clipper Creek	\$925	\$2,109	\$1,650	\$459	Chevy Volt	Chevy Impala 2000	113
248	Dyer	Lake	Clipper Creek	\$769	\$2,013	\$1,650	\$363	Nissan Leaf	MBW 328i 2008	30
249	Syracuse	Kosciusko	Clipper Creek	\$750	\$2,959	\$1,650	\$1,309	Tesla Model S	Chevrolet Tahoe 2010	40
250	Hobart	Lake	Clipper Creek	\$999	\$1,799	\$1,650	\$149	Smart	n/a	60

## IV. Plug-in Electric Vehicle Charging Behavior

### A. Residential Home Charging

The tables below provide load shape information regarding customer response to free off-peak charging, as well as the impact on system load. Also provided is the total usage by calendar month under the EV Rider. The total energy supplied to EVs to date is 1,361,630 kWh. This is comprised of 1,104,632 kWh (81%) provided in the off peak period, and 256,998 kWh (19%) provided in the on peak period. The data suggests that the offer of free electricity during the off peak hours has a direct impact on the charging habits of participants and minimizes the impact to system peak load.

# Energy Usage Under PEV Rider



## Quarterly Data

Typical Load Shape for Total Residential EV Charging Load Data Stated in Local Time for both Central and Eastern Time Zones (Off-Peak is 10:00 PM to 6:00 AM Local Time)								
	Aug-16		Sep-16		Oct-16		3 <sup>rd</sup> Quarter 2016	
	(No. of Observations = 214)		(No. of Observations = 214 to 212)		(No. of Observations = 212 to 213)		(No. of Observations = 214 to 213)	
Hr.	Weekday	Weekend	Weekday	Weekend	Weekday	Weekend	Weekday	Weekend
1	244.14	159.2	248.03	166.21	262.06	168.48	251.14	164.93
2	154.33	134.18	159.75	143.98	163.61	159.36	159.09	146.88
3	102.6	90.75	103.8	105.18	106.27	96.31	104.17	97.33
4	70.31	59.03	69.53	70.76	74.5	62.66	71.38	64.04
5	51.21	39.82	50.61	47.54	55.6	46.04	52.41	44.59
6	29.81	20.84	29.64	23.62	32.59	25.15	30.64	23.35
7	11.77	8.27	13.34	9.47	12.49	11.19	12.52	9.76
8	6.69	6.65	8.54	6.79	9.51	9.95	8.2	7.96
9	5.65	9.59	7.45	6.92	7.78	6.76	6.93	7.68
10	5.85	10.04	6.74	11.29	6.33	9.09	6.3	10.06
11	7.21	9.77	7.1	15.33	6.99	9.75	7.1	11.47
12	10.23	17.91	10.36	16.29	9.62	12.64	10.08	15.39
13	10.54	14.69	11.45	19.69	11.29	16.42	11.08	16.89
14	10.2	13.72	9.17	16.53	11.76	16.44	10.35	15.63
15	10.15	17.4	10.91	15.94	12.42	17.56	11.13	17.01
16	17.23	16.16	16.32	16.08	14.82	18.49	16.16	17.03
17	24.03	14.51	20.45	20.43	18.06	20.44	20.94	18.61
18	20.17	13.3	18.1	18.91	14.77	18.11	17.76	16.88
19	17.68	11.94	19.03	18.66	16.31	17.16	17.69	16.01
20	16.88	13.91	19.86	18.42	15.65	19.34	17.48	17.39
21	22.08	13.2	23.24	19.17	18.3	18.49	21.26	17.07
22	26.57	14.36	26.48	20.2	20.43	15.19	24.59	16.48
23	248.23	175.22	240.93	168.08	251.54	169.8	246.85	170.94
24	302.08	196.19	299.17	197.35	311.41	201.76	304.07	198.69





## V. Voucher Process Timelines:

The following section provides data on the time between various steps in the application process from the initial customer contact to completion of the EV charging station/meter installation.

### A. Residential Home Charging Stations

With the program incentive closing, the data for home charging installations has not changed since last quarter. NIPSCO has averaged 25 days between the initial customer contact date to the date the in-home estimate was performed. The longest span was 190 days, and the shortest was 2 days. Customers who had very long lead times until receiving in-home estimates experienced this delay due to their delay in purchasing a PEV. The average span between the in-home estimate and charger installation is 38 days. The longest period was 332 days (customer elected delay), and the shortest was 2 days. Customers with very long lead times for EV charger installation experienced this delay due to their delaying the purchase of a PEV. The average span between charger installation and meter installation was 19 days. The longest period was 159 days, and the shortest was 0 days. In total, from the date of enrollment request to the date of meter installation, i.e., completion, the average total span was 83 days. The longest overall span was 381 days, and the shortest was 17 days.

Count	Enrollment Date	Enrollment to Home Estimate	Home Estimate to Charger Install	Charger Install to Meter Install	Enrollment to Meter Install
1	1. Meter Installation Completed	14	45	20	79
2	1. Meter Installation Completed	17	41	8	66
3	1. Meter Installation Completed	18	28	25	71
4	1. Meter Installation Completed	17	36	6	59

Count	Enrollment Date	Enrollment to Home Estimate	Home Estimate to Charger Install	Charger Install to Meter Install	Enrollment to Meter Install
5	1. Meter Installation Completed	14	50	15	79
6	1. Meter Installation Completed	10	50	5	65
7	1. Meter Installation Completed	17	31	11	59
8	1. Meter Installation Completed	23	23	7	53
9	1. Meter Installation Completed	17	42	6	65
10	1. Meter Installation Completed	17	32	3	52
11	1. Meter Installation Completed	10	36	15	61
12	1. Meter Installation Completed	10	48	23	81
13	1. Meter Installation Completed	11	41	3	55
14	1. Meter Installation Completed	17	36	11	64
15	1. Meter Installation Completed	17	42	9	68
16	1. Meter Installation Completed	24	38	18	80
17	1. Meter Installation Completed	17	36	11	64
18	1. Meter Installation Completed	70	13	11	94
19	1. Meter Installation Completed	18	36	9	63
20	1. Meter Installation Completed	14	25	3	42
21	1. Meter Installation Completed	11	35	8	54
22	1. Meter Installation Completed	21	45	6	72
23	1. Meter Installation Completed	13	20	12	45
24	1. Meter Installation Completed	67	7	18	92
25	1. Meter Installation Completed	48	21	10	79
26	1. Meter Installation Completed	17	21	6	44
27	1. Meter Installation Completed	35	9	8	52
28	1. Meter Installation Completed	13	16	7	36
29	1. Meter Installation Completed	35	35	9	79
30	1. Meter Installation Completed	35	14	15	64
31	1. Meter Installation Completed	14	58	28	100
32	1. Meter Installation Completed	56	26	3	85
33	1. Meter Installation Completed	62	41	7	110
34	1. Meter Installation Completed	190	73	6	269
35	1. Meter Installation Completed	66	41	50	157
36	1. Meter Installation Completed	13	51	8	72
37	1. Meter Installation Completed	53	55	21	129
38	1. Meter Installation Completed	2	65	21	88
39	1. Meter Installation Completed	8	63	29	100
40	1. Meter Installation Completed	43	56	29	128



Count	Enrollment Date	Enrollment to Home Estimate	Home Estimate to Charger Install	Charger Install to Meter Install	Enrollment to Meter Install
41	1. Meter Installation Completed	14	171	6	191
42	1. Meter Installation Completed	13	16	8	37
43	1. Meter Installation Completed	5	19	30	54
44	1. Meter Installation Completed	19	26	9	54
45	1. Meter Installation Completed	12	34	16	62
46	1. Meter Installation Completed	10	39	15	64
47	1. Meter Installation Completed	20	55	7	82
48	1. Meter Installation Completed	12	18	8	38
49	1. Meter Installation Completed	13	332	13	358
50	1. Meter Installation Completed	30	14	11	55
51	1. Meter Installation Completed	27	10	8	45
52	1. Meter Installation Completed	5	36	15	56
53	1. Meter Installation Completed	7	148	8	163
54	1. Meter Installation Completed	8	5	6	19
55	1. Meter Installation Completed	29	25	16	70
56	1. Meter Installation Completed	22	19	2	43
57	1. Meter Installation Completed	21	22	66	109
58	1. Meter Installation Completed	4	10	66	80
59	1. Meter Installation Completed	10	8	7	25
60	1. Meter Installation Completed	9	12	6	27
61	1. Meter Installation Completed	12	45	12	69
62	1. Meter Installation Completed	55	22	50	127
63	1. Meter Installation Completed	15	9	6	30
64	1. Meter Installation Completed	8	23	8	39
65	1. Meter Installation Completed	5	23	7	35
66	1. Meter Installation Completed	9	20	14	43
67	1. Meter Installation Completed	6	14	3	23
68	1. Meter Installation Completed	30	17	49	96
69	1. Meter Installation Completed	25	13	15	53
70	1. Meter Installation Completed	8	16	8	32
71	1. Meter Installation Completed	8	22	14	44
72	1. Meter Installation Completed	22	52	103	177
73	1. Meter Installation Completed	16	29	43	88
74	1. Meter Installation Completed	5	80	14	99
75	1. Meter Installation Completed	29	115	32	176
76	1. Meter Installation Completed	7	10	49	66



Count	Enrollment Date	Enrollment to Home Estimate	Home Estimate to Charger Install	Charger Install to Meter Install	Enrollment to Meter Install
77	1. Meter Installation Completed	6	17	18	41
78	1. Meter Installation Completed	12	21	21	54
79	1. Meter Installation Completed	11	17	10	38
80	1. Meter Installation Completed	22	36	35	93
81	1. Meter Installation Completed	10	22	14	46
82	1. Meter Installation Completed	13	28	22	63
83	1. Meter Installation Completed	10	2	5	17
84	1. Meter Installation Completed	22	21	13	56
85	1. Meter Installation Completed	12	22	37	71
86	1. Meter Installation Completed	87	28	20	135
87	1. Meter Installation Completed	9	14	6	29
88	1. Meter Installation Completed	12	12	37	61
89	1. Meter Installation Completed	7	98	20	125
90	1. Meter Installation Completed	14	10	11	35
91	1. Meter Installation Completed	13	10	7	30
92	1. Meter Installation Completed	7	8	16	31
93	1. Meter Installation Completed	8	21	19	48
94	1. Meter Installation Completed	10	26	15	51
95	1. Meter Installation Completed	6	35	11	52
96	1. Meter Installation Completed	18	35	7	60
97	1. Meter Installation Completed	15	48	9	72
98	1. Meter Installation Completed	7	24	20	51
99	1. Meter Installation Completed	10	31	48	89
100	1. Meter Installation Completed	10	20	5	35
101	1. Meter Installation Completed	10	10	7	27
102	1. Meter Installation Completed	5	34	14	53
103	1. Meter Installation Completed	7	22	27	56
104	1. Meter Installation Completed	16	64	27	107
105	1. Meter Installation Completed	32	28	6	66
106	1. Meter Installation Completed	18	25	10	53
107	1. Meter Installation Completed	112	85	27	224
108	1. Meter Installation Completed	9	24	17	50
109	1. Meter Installation Completed	23	13	27	63
110	1. Meter Installation Completed	55	48	9	112
111	1. Meter Installation Completed	6	22	17	45
112	1. Meter Installation Completed	6	21	8	35

Count	Enrollment Date	Enrollment to Home Estimate	Home Estimate to Charger Install	Charger Install to Meter Install	Enrollment to Meter Install
113	1. Meter Installation Completed	6	16	12	34
114	1. Meter Installation Completed	20	15	41	76
115	1. Meter Installation Completed	8	10	6	24
116	1. Meter Installation Completed	5	8	18	31
117	1. Meter Installation Completed	7	22	15	44
118	1. Meter Installation Completed	10	27	15	52
119	1. Meter Installation Completed	8	12	22	42
120	1. Meter Installation Completed	61	27	14	102
121	1. Meter Installation Completed	5	28	49	82
122	1. Meter Installation Completed	22	88	11	121
123	1. Meter Installation Completed	3	18	32	53
124	1. Meter Installation Completed	42	15	31	88
125	1. Meter Installation Completed	4	62	16	82
126	1. Meter Installation Completed	3	22	20	45
127	1. Meter Installation Completed	10	34	11	55
128	1. Meter Installation Completed	105	38	39	182
129	1. Meter Installation Completed	105	38	39	182
130	1. Meter Installation Completed	44	31	7	82
131	1. Meter Installation Completed	10	22	17	49
132	1. Meter Installation Completed	47	25	18	90
133	1. Meter Installation Completed	6	10	13	29
134	1. Meter Installation Completed	28	54	26	108
135	1. Meter Installation Completed	64	33	42	139
136	1. Meter Installation Completed	26	94	63	183
137	1. Meter Installation Completed	7	18	14	39
138	1. Meter Installation Completed	42	84	47	173
139	1. Meter Installation Completed	17	22	12	51
140	1. Meter Installation Completed	28	33	47	108
141	1. Meter Installation Completed	40	41	4	85
142	1. Meter Installation Completed	11	17	14	42
143	1. Meter Installation Completed	15	10	25	50
144	1. Meter Installation Completed	8	10	21	39
145	1. Meter Installation Completed	15	82	9	106
146	1. Meter Installation Completed	14	27	7	48
147	1. Meter Installation Completed	15	59	9	83
148	1. Meter Installation Completed	15	13	3	31

Count	Enrollment Date	Enrollment to Home Estimate	Home Estimate to Charger Install	Charger Install to Meter Install	Enrollment to Meter Install
149	1. Meter Installation Completed	16	47	21	84
150	1. Meter Installation Completed	18	57	7	82
151	1. Meter Installation Completed	9	47	5	61
152	1. Meter Installation Completed	10	53	21	84
153	1. Meter Installation Completed	15	13	3	31
154	1. Meter Installation Completed	3	5	30	38
155	1. Meter Installation Completed	12	56	23	91
156	1. Meter Installation Completed	40	26	18	84
157	1. Meter Installation Completed	23	36	21	80
158	1. Meter Installation Completed	15	47	28	90
159	1. Meter Installation Completed	31	20	9	60
160	1. Meter Installation Completed	16	34	5	55
161	1. Meter Installation Completed	46	30	22	98
162	1. Meter Installation Completed	29	15	18	62
163	1. Meter Installation Completed	35	30	16	81
164	1. Meter Installation Completed	21	36	2	59
165	1. Meter Installation Completed	15	63	14	92
166	1. Meter Installation Completed	32	18	29	79
167	1. Meter Installation Completed	11	27	22	60
168	1. Meter Installation Completed	41	42	6	89
169	1. Meter Installation Completed	18	24	33	75
170	1. Meter Installation Completed	67	21	41	129
171	1. Meter Installation Completed	10	43	17	70
172	1. Meter Installation Completed	85	34	20	139
173	1. Meter Installation Completed	15	27	14	56
174	1. Meter Installation Completed	64	11	23	98
175	1. Meter Installation Completed	44	31	19	94
176	1. Meter Installation Completed	41	62	159	262
177	1. Meter Installation Completed	29	39	33	101
178	1. Meter Installation Completed	37	316	28	381
179	1. Meter Installation Completed	37	32	39	108
180	1. Meter Installation Completed	29	64	26	119
181	1. Meter Installation Completed	27	21	18	66
182	1. Meter Installation Completed	24	95	12	131
183	1. Meter Installation Completed	7	27	4	38
184	1. Meter Installation Completed	23	39	30	92

Count	Enrollment Date	Enrollment to Home Estimate	Home Estimate to Charger Install	Charger Install to Meter Install	Enrollment to Meter Install
185	1. Meter Installation Completed	28	12	7	47
186	1. Meter Installation Completed	14	13	9	36
187	1. Meter Installation Completed	12	11	9	32
188	1. Meter Installation Completed	19	59	16	94
189	1. Meter Installation Completed	17	32	29	78
190	1. Meter Installation Completed	29	16	31	76
191	1. Meter Installation Completed	16	42	26	84
192	1. Meter Installation Completed	24	37	30	91
193	1. Meter Installation Completed	25	34	8	67
194	1. Meter Installation Completed	11	18	26	55
195	1. Meter Installation Completed	13	17	21	51
196	1. Meter Installation Completed	37	36	13	86
197	1. Meter Installation Completed	45	30	25	100
198	1. Meter Installation Completed	23	45	38	106
199	1. Meter Installation Completed	51	70	15	136
200	1. Meter Installation Completed	20	21	14	55
201	1. Meter Installation Completed	14	20	14	48
202	1. Meter Installation Completed	25	28	6	59
203	1. Meter Installation Completed	13	45	34	92
204	1. Meter Installation Completed	189	57	21	267
205	1. Meter Installation Completed	21	64	14	99
206	1. Meter Installation Completed	40	28	2	70
207	1. Meter Installation Completed	57	45	17	119
208	1. Meter Installation Completed	28	51	3	82
209	1. Meter Installation Completed	13	52	34	99
210	1. Meter Installation Completed	32	38	26	96
211	1. Meter Installation Completed	70	38	41	149
212	1. Meter Installation Completed	18	33	11	62
213	1. Meter Installation Completed	17	42	12	71
214	1. Meter Installation Completed	58	38	10	106
215	1. Meter Installation Completed	15	63	32	110
216	1. Meter Installation Completed	23	36	9	68
217	1. Meter Installation Completed	57	159	17	233
218	1. Meter Installation Completed	33	40	56	129
219	1. Meter Installation Completed	71	124	18	213
220	1. Meter Installation Completed	19	95	25	139

Count	Enrollment Date	Enrollment to Home Estimate	Home Estimate to Charger Install	Charger Install to Meter Install	Enrollment to Meter Install
221	1. Meter Installation Completed	29	28	22	79
222	1. Meter Installation Completed	108	89	8	205
223	1. Meter Installation Completed	8	35	20	63
224	1. Meter Installation Completed	37	49	72	158
225	1. Meter Installation Completed	16	28	14	58
226	1. Meter Installation Completed	15	70	15	100
227	1. Meter Installation Completed	22	24	19	65
228	1. Meter Installation Completed	15	30	13	58
229	1. Meter Installation Completed	16	55	10	81
230	1. Meter Installation Completed	17	34	21	72
231	1. Meter Installation Completed	12	47	5	64
232	1. Meter Installation Completed	28	45	6	79
233	1. Meter Installation Completed	6	15	6	27
234	1. Meter Installation Completed	14	46	9	69
235	1. Meter Installation Completed	12	53	34	99
236	1. Meter Installation Completed	32	35	46	113
237	1. Meter Installation Completed	34	54	3	91
238	1. Meter Installation Completed	43	55	18	116
239	1. Meter Installation Completed	32	36	3	71
240	1. Meter Installation Completed	19	89	8	116
241	1. Meter Installation Completed	18	34	68	120
242	1. Meter Installation Completed	17	32	20	69
243	1. Meter Installation Completed	21	43	15	79
244	1. Meter Installation Completed	58	35	6	99
245	1. Meter Installation Completed	22	19	13	54
246	1. Meter Installation Completed	30	51	17	98
247	1. Meter Installation Completed	50	27	24	101
248	1. Meter Installation Completed	11	29	n/a	40
249	1. Meter Installation Completed	38	140	n/a	178
250	1. Meter Installation Completed	12	94	n/a	106
<b>Max</b>		<b>190</b>	<b>332</b>	<b>159</b>	<b>381</b>
<b>Min</b>		<b>2</b>	<b>2</b>	<b>2</b>	<b>17</b>
<b>Avg</b>		<b>25</b>	<b>38</b>	<b>19</b>	<b>83</b>

## VI. Public Charging Stations

### A. Summary

Six additional public charging stations were installed during this quarter. As of October 31, 2016, ninety two public charging locations exist in Northern Indiana. Eighty four locations are within NIPSCO's service territory: forty four locations are within Lake County, twenty three locations are in Porter County, six locations are in La Porte County, three locations are in Steuben County, two locations are in Elkhart County, one location is in Marshall County, one location is in St. Joseph County, three locations are in Kosciusko County and one location within Whitley County. Eight additional public charging locations, which may be used by customers in NIPSCO's IN-Charge Electric Vehicle Pilot Program, are found near but outside of NIPSCO's electric service territory. These public charging locations are highlighted in gray in the following table. As shown in the public charging station maps below, many stations can be found in the Chicagoland area to the west and within Michigan to the north and northeast of Northern Indiana.

Providing future public charging stations within Northern Indiana will fill the gap that currently exists between Chicago, Detroit and Indianapolis.

Public Charging Stations Currently Available within and near								
NIPSCO's Electric Service Territory								
Sector	Name	Address	City	County	Number of Ports			Cost
					Level 1	Level 2	Level 3	
Workplace	NIPSCO Southlake	801 E. 86th Ave.	Merrillville	Lake	3	4	0	Free
Municipality	Town of Dyer	One Town Square	Dyer	Lake	3	3	0	Free
Retail	Michigan City Outlet Mall	601 Wabash Street	Michigan City	LaPorte	0	2	0	\$2/Hr
Retail	University Park Mall	6501 N. Grape Rd.	Mishawaka	St. Joseph	0	2	0	\$2/hr
Car Dealership	Christenson Chevrolet	9700 Indianapolis Blvd	Highland	Lake	0	2	0	Free
Car Dealership	Napleton Nissan	1301 Indianapolis Blvd	Schererville	Lake	0	1	0	Free
Car Dealership	Southlake Nissan	4201 E. Lincoln Hwy	Merrillville	Lake	0	2	0	Free
Car Dealership	Bob Rohrman Nissan	220 Verplank Rd	Burns Harbor	Porter	0	2	0	Free
Car Dealership	Gurley Leep Nissan	5210 N. Grape Rd.	Mishawaka	St. Joseph	0	1	0	Free
Car Dealership	Tom Naquin Nissan	2500 W. Lexington Ave.	Elkhart	Elkhart	0	1	0	Free
Car Dealership	Sorg Nissan	2845 Detroit St.	Warsaw	Kosciusko	0	1	0	Free
Car Dealership	Fort Wayne Nissan	4909 Lima Rd.	Fort Wayne	Allen	0	1	0	Free
Retail	Strack & Van Til	9599 W. 133rd Ave.	Cedar Lake	Lake	0	2	0	Free
Hospital	Parkview Health	11109 Parkview Plaza Dr.	Fort Wayne	Allen	0	8	0	Free
Workplace	NIPSCO Hammond LOA	1313 167th St.	Hammond	Lake	0	2	0	Free

Public Charging Stations Currently Available within and near								
NIPSCO's Electric Service Territory								
Sector	Name	Address	City	County	Number of Ports			Cost
					Level 1	Level 2	Level 3	
Workplace	NIPSCO Valpo LOA	22 S. State Rd 49	Valparaiso	Porter	0	2	0	Free
Workplace	NIPSCO Crown Pt. LOA	20 Joseph St.	Crown Pt.	Lake	0	2	0	Free
Government Public Areas	Whiting Lakefront Park	Front St	Whiting	Lake	0	2	0	Free
Major Transportation Corridors	Tesla Supercharger	3855 Indiana 127	Angola	Steuben	0	0	6	Free
Major Transportation Corridors	Tesla Supercharger	6501 Grape Road	Mishawaka	St. Joseph	0	0	6	Free
Government Public Areas	North Tt Wicker Pk M70c	8554 Indianapolis Blvd.	Highland	Lake	0	4	0	Free
Government Public Areas	Hammond Port Authority	701 Casino Center Dr	Hammond	Lake	0	2	0	Free
Retail	Kohl's Department Store	10353 Indianapolis Blvd	Highland	Lake	0	2	0	Free
Workplace	Munster Medical Research	9950 Calumet Ave Munster	Munster	Lake	0	2	0	Free
University	Goshen College	1700 S Main St	Goshen	Elkhart	0	2	0	Free
Workplace	Munster Medical Research	7651 Harvest Dr Lot 2	Schererville	Lake	0	2	0	Free
Workplace	Munster Medical Research	10020 Donald S Powers Dr	Munster	Lake	0	2	0	Free
Retail	Kohl's Department Store	3300 N. Wayne	Angola	Steuben	0	2	0	Free



Public Charging Stations Currently Available within and near								
NIPSCO's Electric Service Territory								
Sector	Name	Address	City	County	Number of Ports			Cost
					Level 1	Level 2	Level 3	
Workplace	Grace Schools	808 Kings Highway	Winona Lake	Kosciusko	0	2	0	Free
Retail	Kohl's Department Store	350 Silhavy Rd	Valparaiso	Porter	0	2	0	Free
Retail	Kohl's Department Store	6495 US Highway 6	Portage	Porter	0	2	0	Free
Workplace	Munster Medical Research	901 MacArthur Blvd	Munster	Lake	0	2	0	Free
Workplace	Munster Medical Research	801 MacArthur Blvd	Munster	Lake	0	2	0	Free
Workplace	Land O Frost	630 Hagburg Drive	Munster	Lake	0	2	0	Free
Retail	Horseshoe Casino	777 Casino Center Drive	Hammond	Lake	0	2	0	Free
Commercial	St. Mary Medical Center	1500 S Lake Park Ave.	Hobart	Lake	0	2	0	Free
Workplace	Valparaiso Medical Development	3800 St. Mary Dr.	Valparaiso	Porter	0	4	0	Free
Workplace	St. Catherine Hospital	4321 First St.	East Chicago	Lake	0	2	0	Free
Workplace	Munster Medical Research	9660 Wicker Ave.	St. John	Lake	0	2	0	Free
University	Purdue University Calumet	2300 173rd St.	Hammond	Lake	0	2	0	Free
University	Purdue University Calumet	2200 169th St.	Hammond	Lake	0	2	0	Free

Public Charging Stations Currently Available within and near								
NIPSCO's Electric Service Territory								
Sector	Name	Address	City	County	Number of Ports			Cost
					Level 1	Level 2	Level 3	
University	Indiana University Northwest	3400 Broadway	Gary	Lake	0	4	0	Free
Municipality	Town of Chesterton	2nd Street	Chesterton	Porter	0	2	0	Free
Retail	3 BOYS DINING LLC / Pine Creek Plaza	2852 Miller Dr 46563 & 2850 Miller Dr	Plymouth	Elkhart	0	4	0	Free
Workplace	Urschel Lab Inc	1200 Leading Edge Dr.	Chesterton	Porter	0	4	0	Free
Workplace	MonoSol	1500 Louis Sullivan Drive	Portage	Porter	0	2	0	Free
Workplace	Purdue North Cenral	1401 S. U.S. Hwy 421	Westville	LaPorte	0	4	0	Free
Workplace	Lake Park Surgicare, St Mary Medical Center	7921 Grand Blvd	Hobart	Lake	0	2	0	Free
Major Transportation Corridors	City of Angola	206 N. Wayne St.	Angola	Steuben	0	2	0	Free
Workplace	MonoSol	707 East 80th Place Suite 301	Merrillville	Lake	0	2	0	Free
Workplace	MonoSol	7921 Grand Blvd	La Porte	La Porte	0	2	0	Free
Workplace	Lake County Solid Waste Management District/ Town of Merrillville	7820 Broadway	Merrillville	Lake	0	2	0	Free

Public Charging Stations Currently Available within and near								
NIPSCO's Electric Service Territory								
Sector	Name	Address	City	County	Number of Ports			Cost
					Level 1	Level 2	Level 3	
Commercial	Methodist Hospital	600 Grant Street	Gary	Lake	0	2	0	Free
Workplace	MonoSol	1701 County Line Road	Portage	Porter	0	2	0	Free
Commercial	Methodist Hospitals	8701 Broadway	Merrillville	Lake	0	4	0	Free
Municipality	City of Whiting	Lakefront Park	Whiting	Lake	0	2	0	Free
Retail	North Central IN Equip	919 E Mishawaka Road	Elkhart	Elkhart	0	2	0	Free
Workplace	Fronius	6797 Fronius Drive	Portage	Porter	0	2	0	Free
Retail	Ozinga - Gary	400 Blaine St.	Gary	Lake	0	4	0	Free
Workplace	Arcelor Mittal Burns Harbor	250 West US Highway 12	Burns Harbor	Porter	0	2	0	Free
Municipality	City of Hobart	414 Main Street	Hobart	Lake	0	2	0	Free
Workplace/Employees & Public	Lake County Solid Waste Management District	2405 Calumet Avenue	Hammond	Lake	0	2	0	Free
Municipality	Town of Cedar Lake	7408 Constitution Avenue	Cedar Lake	Lake	0	2	0	Free
Workplace/Employees	NIPSCO - Merrillville	801 E 86th Ave.	Merrillville	Lake	0	2	0	Free
Municipality	City of LaPorte - Kesling Park	1208 Pine Lake Avenue	La Porte	La Porte	0	2	0	Free

Public Charging Stations Currently Available within and near								
NIPSCO's Electric Service Territory								
Sector	Name	Address	City	County	Number of Ports			Cost
					Level 1	Level 2	Level 3	
Workplace/Employees	City of La Porte	2101 Boyd Blvd	La Porte	La Porte	0	2	0	Free
Municipality	Town of New Chicago	122 Huber Blvd.	New Chicago	Lake	0	2	0	Free
Workplace/Employees & possibly Public	Ozinga - Crown Point	1211 E Summit St.	Crown Pt.	Lake	0	2	0	Free
Municipality	City of East Chicago	3444 Aldis Avenue	East Chicago	Lake	0	2	0	Free
Governmental Public Area	Tri Town Safety Village	1350 Eagle Ridge dr	Shererville	Lake	0	2	0	Free
Municipality	City of Hammond	2801 178th Drive	Hammond	Lake	0	2	0	Free
Governmental Public Area	NIRPC	6100 Southport Road	Portage	Porter	0	2	0	Free
Transportation Corridor	City of Valparaiso	Jefferson and Lafayette	Valparaiso	Porter	0	2	0	Free
Municipality	City of Valparaiso	209 Lincolnway lot	Valparaiso	Porter	0	2	0	Free
Municipality	Town of Beverly Shores	501 S. Broadway	Beverly Shores	Porter	0	2	0	Free
Municipality	City of La Porte	618 Lincolnway	La Porte	La Porte	0	2	0	Free
Municipality	City of Gary	Marquette Park	Gary	Lake	0	2	0	Free
Government Public Areas	Taltree Arboretum & Garden	450 W 100 N	Valparaiso	Porter	0	2	0	Free

Public Charging Stations Currently Available within and near								
NIPSCO's Electric Service Territory								
Sector	Name	Address	City	County	Number of Ports			Cost
					Level 1	Level 2	Level 3	
Government Public Areas	Indiana Dunes National Lakeshore VISITOR CENTER	376 N. County Line Rd.	Portage	Porter	0	2	0	Free
Municipality	City of LaPorte - Water Treatment Plant	1315 Lake St	La Porte	Porter	0	2	0	Free
Municipality	Michigan City Sanitary Di	1100 E. 8th Street	Michigan City	Porter	0	2	0	Free
Municipality	Town of Westville	502 Franklin St.	Westville	Porter	0	2	0	Free
Government Public Areas	Indiana Dunes National Lakeshore - WEST BEACH	1215 N. State Road 49	Porter	Porter	0	2	0	Free
Government Public Areas	IN DNR -IN Dunes State Park	1600 North 25 East	Chesterton	Porter	0	2	0	Free
Government Public Areas	IN DNR - Potato Creek State Park	25601 SR 4 Box 908	North Liberty	St. Joseph	0	2	0	Free
Government Public Areas	City of Portage Redevelop	6090 U.S. Hwy 12	Portage	Porter	0	2	0	Free
Retail	Inn at St. Mary's (Tesla Only)	53993 US 933	South Bend	St. Joseph	0	2	0	Free
Car Dealership	BMW Schereville	1410 US 41	Schererville	Lake	0	2	0	Free
Retail	LaSaalle Grill (Tesla Only)	115 W Colfax Ave	South Bend	St. Joseph	0	1	0	Free

Public Charging Stations Currently Available within and near								
NIPSCO's Electric Service Territory								
Sector	Name	Address	City	County	Number of Ports			Cost
					Level 1	Level 2	Level 3	
Retail	New Oberpalz Brewing (Tesla Only)	121 E Main St	Griffith	Lake	0	2	0	Free
Retail	Wyndham Garden (Tesla Only)	2519 E Center St.	Warsaw	Kosciusko	0	2	0	Free
Retail	Joseph Decvil Farm stand (Tesla Only)	6756 E 900 St.	Columbia City	Whitley	0	1	0	Free

Locations, charger and cost information obtained from

[http://afdc.energy.gov/fuels/electricity\\_locations.html](http://afdc.energy.gov/fuels/electricity_locations.html)

[https://na.chargepoint.com/charge\\_point](https://na.chargepoint.com/charge_point)

Additions from NIPSCO Phase II program

## B. Locations of Public Charging Stations

The maps below provide information on the location of public charging stations throughout the U.S. and around NIPSCO's electric service territory as of October 31, 2016. (Source: [https://na.chargepoint.com/charge\\_point](https://na.chargepoint.com/charge_point))





Item	Description	Budget	Expenditures	Amount Remaining
1	<b>NIPSCO Fleet Purchase</b>			
	Think Vehicles	\$ 90,000	\$ 97,970	\$ (7,970)
	Less: Federal Tax Credit (\$7,500/EV)	\$ (30,000)	\$ (30,000)	\$ -
	<b>Total</b>	<b>\$ 60,000</b>	<b>\$ 67,970</b>	<b>\$ (7,970)</b>
2	<b>NIPSCO Fleet Charging Stations (6 Stations)</b>			
	Fleet EVSE and Installation	\$ 40,000	\$ 3,834	\$ 36,166
	Metering	\$ 5,000	\$ -	\$ 5,000
	<b>Total</b>	<b>\$ 45,000</b>	<b>\$ 3,834</b>	<b>\$ 41,166</b>
3	<b>NIPSCO Residential Charging Stations</b>			
	Financial Incentives (\$1,650/Cust)	\$ 413,000	441,536	\$ (28,536)
	2nd Sub-Meter (\$432*250 cust)	\$ 108,000	\$ 108,000	\$ -
	<b>Total</b>	<b>\$ 521,000</b>	<b>\$ 549,536</b>	<b>\$ (28,536)</b>
4	<b>NIPSCO Public Charging Stations</b>	<b>\$ 70,000</b>	<b>\$ 81,241</b>	<b>\$ (11,241)</b>
5	<b>IT Cost</b>	<b>\$ 21,000</b>	<b>\$ 21,000</b>	<b>\$ -</b>
6	<b>Education &amp; Outreach &amp; Marketing</b>	<b>\$ 45,000</b>	<b>\$ 39,570</b>	<b>\$ 5,430</b>
7	<b>Market Penetration &amp; Infrastructure Plan</b>	<b>\$ 80,000</b>	<b>\$ 73,625</b>	<b>\$ 6,375</b>
8	<b>Internal Administration</b>	<b>\$ 20,000</b>	<b>\$ 20,000</b>	<b>\$ -</b>
9	<b>External Administration</b>			
	South Shores Clean Cities	\$ 25,000	\$ 25,000	\$ 0
	Residential EV Chargin Station Administrator	\$ 107,000	\$ 112,270	\$ (5,270)
	<b>Total</b>	<b>\$ 132,000</b>	<b>\$ 137,270</b>	<b>\$ (5,270)</b>
10	<b>Renewable Energy Credits</b>	<b>\$ -</b>	<b>\$ 4,967</b>	<b>\$ (4,967)</b>
11	<b>Total Budget</b>	<b>\$ 994,000</b>	<b>\$ 999,012</b>	<b>\$ (5,012)</b>

Note: Internal Administration is capped at \$20,000 in accordance with the agreement between the Environmental Protection Agency and NIPSCO. Actual Internal Administration through October 2016 was over \$150,000 when internal allocated payroll is included.

Notes on tracking expenses:



1. In accordance with the Commission's February 1, 2012 Order in Cause No. 44016, NIPSCO is authorized to create a regulatory asset for the deferral of the costs shown in Exhibit A to the Stipulation and Settlement Agreement up to a maximum of \$711,000. The total current amount to be created as a regulatory asset is \$711,000 (the sum of the amounts in Items 3 (incentive only), 5, 6, 7, 8 and 9 (\$441,536 + \$21,000 + \$39,570 + \$73,625 + \$20,000 + \$137,270 = \$733,001)). The overage of \$22,001 (\$733,001 - \$711,000) has been transferred out of the regulatory asset account.

2. In accordance with the Commission's February 1, 2012 Order in Cause No. 44016, NIPSCO is authorized to create a regulatory asset for the depreciation expense on the NIPSCO-owned charging station and any meters provided to customer pursuant to Rider 684 shown in Exhibit A to the Stipulation and Settlement Agreement up to a maximum of \$178,000.

3. In accordance with the Commission's July 18, 2016 Order in Cause No. 44688, NIPSCO will amortize the amounts in these accounts over 3 years. The current remaining balances as of October 31, 2016 for the regulatory asset deferral is \$479,330 and for the depreciation expense is \$29,689.95

## **VIII. Tracker Impact**

The table below shows the amount of adjustment by each tracker for each month in the period June 2012 through October 2016. The total adjustment during Quarter 3 of Program Year 5 (August 2016 – October 2016) was \$4,625.27. The amount collected through October 31, 2016 relating to the trackers was \$48,713.89.

Month	Total Fuel Cost	Total RTO Cost	Total RA Cost	Total DSM Cost	Total EER Cost	Total ECR Cost	Total FMC Cost	Total TDSIC Cost	Total Tracker Cost
Jun-12	\$ 6.64	\$ (0.06)	\$ 0.02	\$ 0.92	\$ 0.51	\$ 0.18			\$ 8.21
Jul-12	\$ 111.28	\$ (0.97)	\$ 0.23	\$ 14.97	\$ 7.75	\$ 2.73			\$ 135.98
Aug-12	\$ 79.87	\$ (0.83)	\$ 0.20	\$ 12.75	\$ 6.60	\$ 2.33			\$ 100.91
Sep-12	\$ 87.93	\$ (0.99)	\$ 0.24	\$ 15.16	\$ 7.85	\$ 2.77			\$ 112.96
Oct-12	\$ 83.34	\$ (0.87)	\$ 0.21	\$ 13.39	\$ 6.93	\$ 2.45			\$ 105.44
Nov-12	\$ 142.77	\$ 3.83	\$ 14.51	\$ 21.77	\$ 11.27	\$ 3.98			\$ 198.13
Dec-12	\$ 119.82	\$ 3.29	\$ 12.45	\$ 18.68	\$ 9.67	\$ 7.77			\$ 171.68
Jan-13	\$ 125.53	\$ 3.40	\$ 12.86	\$ 27.99	\$ 9.98	\$ 8.03			\$ 187.79
Feb-13	\$ 258.92	\$ 7.26	\$ 27.47	\$ 59.77	\$ 21.33	\$ 17.14			\$ 391.89
Mar-13	\$ 203.15	\$ 5.43	\$ 20.54	\$ 44.69	\$ 15.95	\$ 12.82			\$ 302.57
Apr-13	\$ 306.69	\$ 7.88	\$ 29.82	\$ 64.89	\$ 23.15	\$ 18.61			\$ 451.05
May-13	\$ 233.54	\$ 3.06	\$ 18.94	\$ 47.53	\$ 0.61	\$ 20.79			\$ 324.47
Jun-13	\$ 487.73	\$ 6.84	\$ 39.55	\$ 97.48	\$ 4.29	\$ 41.51			\$ 677.40
Jul-13	\$ 317.92	\$ 4.21	\$ 25.34	\$ 34.92	\$ 1.13	\$ 27.59			\$ 411.11
Aug-13*	\$ 389.40	\$ 5.10	\$ 31.04	\$ 76.33	\$ 1.37	\$ 33.23			\$ 536.46
Sep-13	\$ 337.10	\$ 5.31	\$ 32.08	\$ 42.53	\$ 1.72	\$ 34.73			\$ 453.47
Oct-13	\$ 347.21	\$ 4.75	\$ 28.79	\$ 38.01	\$ 1.43	\$ 31.21			\$ 451.40
Nov-13	\$ 487.59	\$ 9.81	\$ 45.79	\$ 97.98	\$ 1.76	\$ 65.50			\$ 708.44
Dec-13	\$ 647.24	\$ 13.05	\$ 60.88	\$ 130.27	\$ 2.35	\$ 87.09			\$ 940.87
Jan-14	\$ 372.73	\$ 6.95	\$ 32.43	\$ 42.02	\$ 1.25	\$ 46.39			\$ 501.77
Feb-14	\$ 456.34	\$ 8.16	\$ 38.09	\$ 49.35	\$ 1.47	\$ 54.48			\$ 607.89
Mar-14	\$ 725.50	\$ 12.37	\$ 57.72	\$ 74.79	\$ 2.22	\$ 82.57			\$ 955.18
Apr-14	\$ 790.46	\$ 15.27	\$ 71.24	\$ 92.31	\$ 2.75	\$ 101.91			\$ 1,073.94
May-14	\$ 651.17	\$ 14.05	\$ 47.69	\$ 71.23	\$ 5.95	\$ 78.10			\$ 868.19
Jun-14	\$ 747.68	\$ 17.05	\$ 57.90	\$ 86.49	\$ 7.23	\$ 94.83			\$ 1,011.18
Jul-14	\$ 546.61	\$ 14.08	\$ 47.79	\$ 139.93	\$ 5.97	\$ 78.27			\$ 832.65
Aug-14	\$ 644.17	\$ 15.30	\$ 51.95	\$ 152.11	\$ 6.49	\$ 85.08	\$ 3.52		\$ 958.62
Sep-14	\$ 567.51	\$ 14.26	\$ 48.42	\$ 141.76	\$ 6.05	\$ 79.29	\$ 3.36		\$ 860.64
Oct-14	\$ 878.72	\$ 20.56	\$ 69.80	\$ 204.38	\$ 8.72	\$ 114.31	\$ 4.79		\$ 1,301.28
Nov-14	\$ 790.38	\$ 33.60	\$ 70.46	\$ 191.96	\$ 8.19	\$ 134.94	\$ 4.44	\$ -	\$ 1,233.96
Dec-14	\$ 609.63	\$ 28.54	\$ 59.85	\$ 163.06	\$ 6.95	\$ 114.62	\$ 3.78	\$ 3.78	\$ 990.20
Jan-15	\$ 534.40	\$ 25.71	\$ 53.93	\$ 97.79	\$ 6.29	\$ 103.24	\$ 3.41	\$ 3.39	\$ 828.16
Feb-15	\$ 500.73	\$ 23.18	\$ 48.61	\$ 88.15	\$ 5.67	\$ 93.07	\$ 2.40	\$ 3.06	\$ 764.87
Mar-15	\$ 828.92	\$ 40.73	\$ 85.44	\$ 154.93	\$ 9.96	\$ 163.58	\$ 4.22	\$ 5.38	\$ 1,293.15
Apr-15	\$ 714.33	\$ 35.74	\$ 74.96	\$ 135.93	\$ 8.74	\$ 143.52	\$ 3.70	\$ 4.72	\$ 1,121.64
May-15	\$ 1,138.68	\$ 22.84	\$ 99.03	\$ 186.79	\$ 86.43	\$ 213.43	\$ 5.08	\$ 6.48	\$ 1,758.76
Jun-15	\$ 825.82	\$ 17.16	\$ 74.39	\$ 140.31	\$ 64.93	\$ 160.32	\$ 3.82	\$ -	\$ 1,286.75
Jul-15	\$ 814.80	\$ 16.67	\$ 72.26	\$ 120.79	\$ 63.07	\$ 155.74	\$ 3.71	\$ -	\$ 1,247.04
Aug-15	\$ 828.68	\$ 17.59	\$ 76.24	\$ 127.43	\$ 66.54	\$ 164.31	\$ 1.87	\$ -	\$ 1,282.66
Sep-15	\$ 915.28	\$ 20.71	\$ 89.78	\$ 150.08	\$ 78.36	\$ 193.50	\$ 2.20	\$ -	\$ 1,449.91
Oct-15	\$ 889.07	\$ 18.96	\$ 82.22	\$ 137.43	\$ 71.76	\$ 177.19	\$ 2.02	\$ -	\$ 1,378.65
Nov-15	\$ 936.73	\$ 41.94	\$ 89.30	\$ 142.63	\$ 74.48	\$ 204.16	\$ 2.10	\$ -	\$ 1,491.33
Dec-15	\$ 874.09	\$ 44.93	\$ 95.67	\$ 152.81	\$ 79.79	\$ 218.72	\$ 2.24	\$ -	\$ 1,468.25
Jan-16	\$ 963.68	\$ 45.31	\$ 96.49	\$ 59.72	\$ 80.47	\$ 220.60	\$ 2.26	\$ -	\$ 1,468.54
Feb-16	\$ 1,027.06	\$ 49.93	\$ 106.32	\$ 65.80	\$ 88.67	\$ 243.07	\$ 5.29	\$ (6.95)	\$ 1,579.20
Mar-16	\$ 965.93	\$ 44.55	\$ 94.86	\$ 58.71	\$ 79.11	\$ 216.87	\$ 4.72	\$ (6.20)	\$ 1,458.54
Apr-16	\$ 1,134.88	\$ 49.98	\$ 106.44	\$ 65.88	\$ 88.77	\$ 243.34	\$ 5.30	\$ (6.96)	\$ 1,687.61
May-16	\$ 948.96	\$ 47.00	\$ 90.81	\$ 59.25	\$ 104.73	\$ 204.72	\$ 4.76	\$ (6.26)	\$ 1,453.98
Jun-16	\$ 1,028.50	\$ 48.96	\$ 94.58	\$ 61.72	\$ 109.08	\$ 213.24	\$ 4.96	\$ (6.52)	\$ 1,554.53
Jul-16	\$ 1,020.07	\$ 48.51	\$ 93.73	\$ 169.19	\$ 108.10	\$ 211.31	\$ 4.92	\$ (6.46)	\$ 1,649.35
Aug-16	\$ 1,109.25	\$ 49.86	\$ 96.33	\$ 62.86	\$ 111.10	\$ 217.17	\$ 4.55	\$ -	\$ 1,651.12
Sep-16	\$ 899.60	\$ 46.62	\$ 90.07	\$ 58.78	\$ 103.88	\$ 203.07	\$ 4.25	\$ -	\$ 1,406.27
Oct-16	\$ 1,024.35	\$ 24.55	\$ 92.89	\$ 109.92	\$ 107.13	\$ 209.42	\$ (0.38)	\$ -	\$ 1,567.88
	\$32,478.40	\$ 1,061.08	\$ 2,958.65	\$ 4,676.30	\$ 1,795.91	\$5,658.82	\$ 97.31	\$ (12.56)	\$ 48,713.89

## IX. Customer Education and Outreach

In order to effectively reach external stakeholders, for the period August 1, 2016 through October 31, 2016, NIPSCO engaged the following communications tactics to ensure consistent and effective messaging about the IN-Charge Electric Vehicle Program.

Date	Tactic	Notes
Ongoing	Website and Newsletter	NIPSCO EV program presence on NIPSCO Website and in monthly South Shore Clean Cities newsletters.
Ongoing	EV car dealer outreach	Offer program brochures

## X. Estimate of Annual Emission Savings

Emissions will be based on EPA's estimate for a typical passenger vehicle. Since NIPSCO used Renewable Energy Certificates (RECs) to supply fuel for these vehicles, reductions in emissions are assumed to be equal to those produced by the average passenger vehicle. The emission reductions below reflect various penetration levels of plug-in EVs, or PEVs, and the corresponding annual amount of CO<sub>2</sub> reduced. 1,361,630 kWh has been consumed through the EV charging stations. This is comprised of 1,104,632, kWh (81%) provided in the off peak period, and 256,998 kWh (19%) provided in the on peak period. On June 30, 2016, NIPSCO forecasted the number of RECs needed to be purchased based on the number of RECs consumed to date and the number of RECs projected to be needed for another 5 years for both the NIPSCO In-Charge – "At Home" Program and the NIPSCO In-Charge – "Around Town" Program. NIPSCO then purchased the projected number of 14,355 RECs in the amount of \$0.33/REC and an M-RETS retirement cost of \$0.016/REC for a total cost of \$4,966.83.

Emission <sup>(1)</sup>	Annual Reduction in Emission (Metric Tons)							
	Total Number of PEVs							
	25	50	100	150	200	250	300	350
VOC	0.416	0.832	1.664	2.496	3.328	4.160	4.992	5.824
NOx	0.279	0.558	1.115	1.673	2.231	2.788	3.346	3.904
PM <sub>2.5</sub>	0.002	0.003	0.007	0.010	0.013	0.016	0.020	0.023
CO <sub>2</sub>	148	296	593	889	1,186	1,482	1,779	2,075

(1) 2008 EPA Report "Average Annual Emissions and Fuel Consumption for Gasoline-Fueled Passenger Cars and Light Trucks"  
Emission Factor VOC = 1.034 g/mi., NOx = 0.693 g/mi., PM<sub>2.5</sub> = 0.0041 g/mi, CO<sub>2</sub> = 368.4 g /mi.

## XI. Update on Phase II - NIPSCO IN-Charge EV Program - Around Town

On February 18, 2014, NIPSCO announced its Phase II NIPSCO IN-Charge EV Program – Around Town and began taking applications on February 19, 2014. This pilot program was being offered as part of a Supplemental Environmental Project under the settlement of the NIPSCO New Source

Review Notice of Violation. NIPSCO is not requesting any regulatory treatment of costs associated with the NIPSCO IN-Charge EV Program - Around Town program. NIPSCO is working with [South Shore Clean Cities](#) to administer the program. NIPSCO is no longer accepting new applications as it has already received the number of applications forecasted to consume all of the remaining program funding.

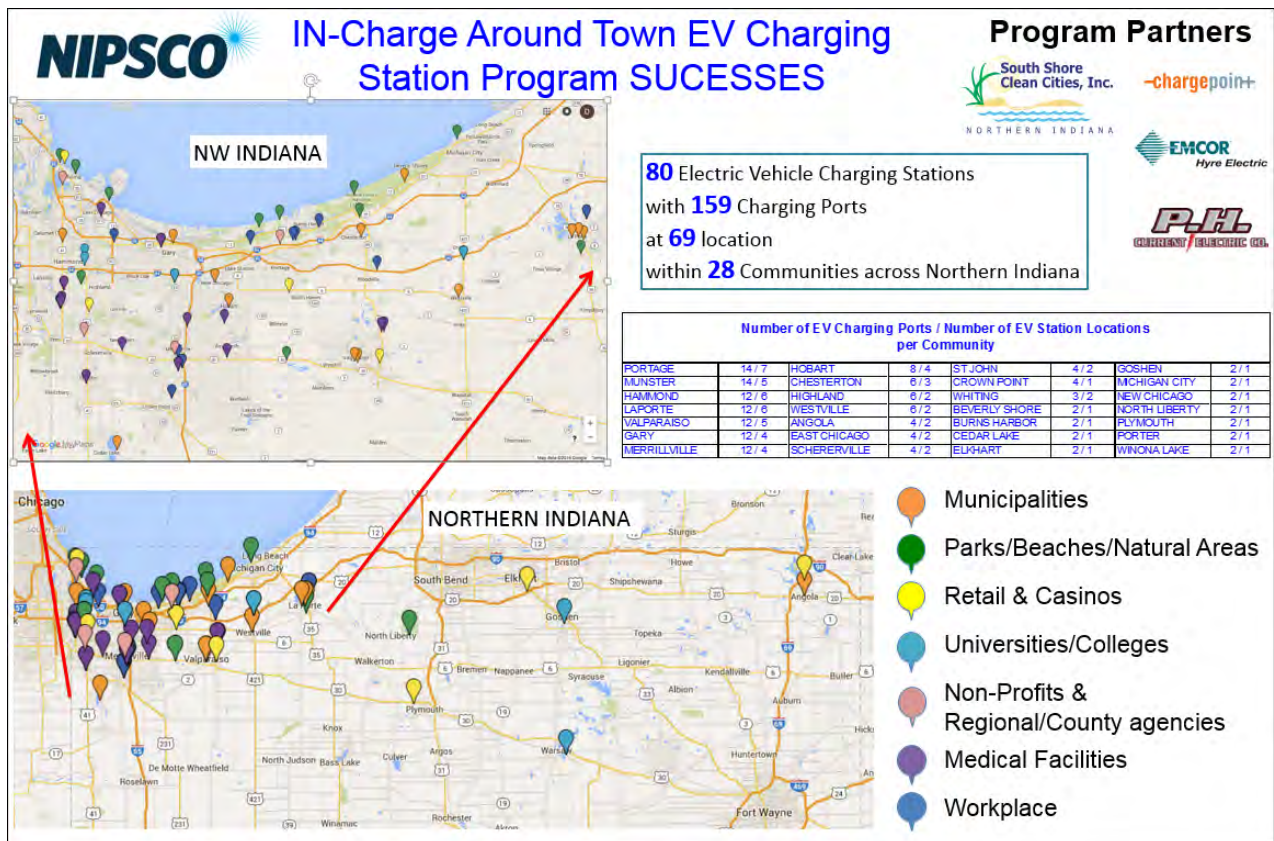
The NIPSCO IN-Charge EV Program - Around Town offers incentives to help with up-front costs of Level II and Level III EV charging stations, in addition to installation costs and software subscriptions. The chart below shows the benefits available to eligible participants.

<b>EV Charging Level</b>	<b>Level II</b>	<b>Level III (DC Fast Charging)</b>
<b>Charging Station</b>	Up to two ChargePoint 4000 series charging stations	50% of equipment and installation costs, up to \$37,500
<b>Installation</b>	50% of cost, up to \$3,000	50% of equipment and installation costs, up to \$37,500
<b>Software Agreement</b>	Two-year ChargePoint Commercial Network Software Agreement	Two-year ChargePoint Commercial Network Software Agreement

To ensure a variety of charging locations and accelerate the introduction of EVs across northern Indiana, incentives have been earmarked for various categories. The table below represents the initial amount of incentive money available to each category.

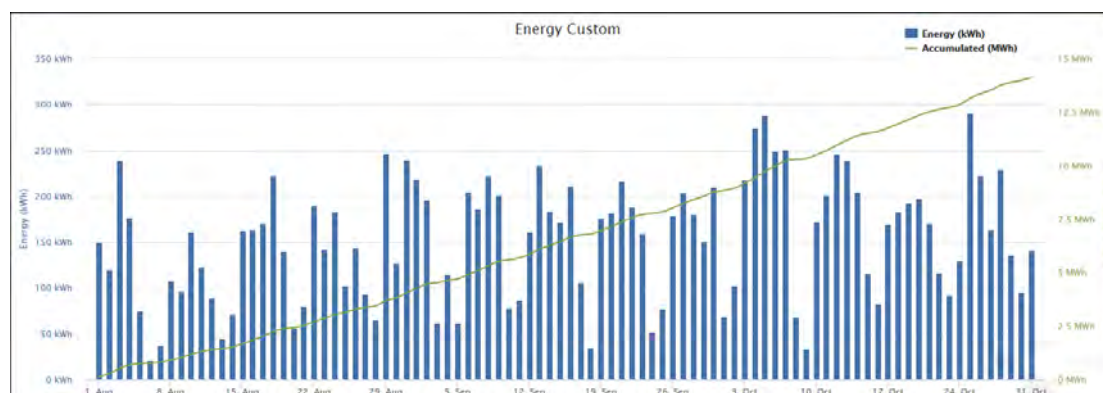
<b>Type</b>	<b>% of Available Funding</b>
<b>Universities &amp; Workplaces</b>	25%
<b>Apartments</b>	5%
<b>Governmental Public Areas</b>	15%
<b>Major Transportation Corridors</b>	25%
<b>Commercial &amp; Retail</b>	20%
<b>Contingency</b>	10%

On July 31, 2016, NIPSCO closed this program because all program funding had been utilized. NIPSCO received 116 customer applications for public charging stations. Of the 136 station applications, 80 station locations have been installed and 36 customers have opted out. The process of enrollment through installation is more complex than the home charging station program, and therefore, it is anticipated that the timeline from application through installation will be as long as 2 to 6 months. Upon completion of a customer site visit, a bid spec for the installation is completed and sent to potential installation contractors to provide quotes. Upon receiving the installation quotes, the customer must go through its internal approval process to proceed with installation. This typically takes several weeks or longer. When these charging stations are operational, the charging stations are added to Section VI of this report. A map of the Phase II Charging location activity is provided below:



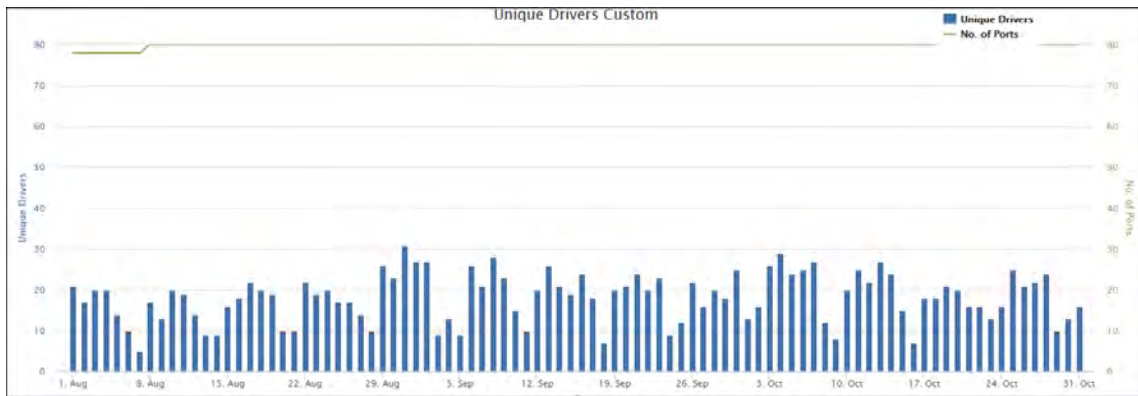
Below is summary public charging station information from August 1, 2016 through October 31, 2016

Graph 1: Energy usage

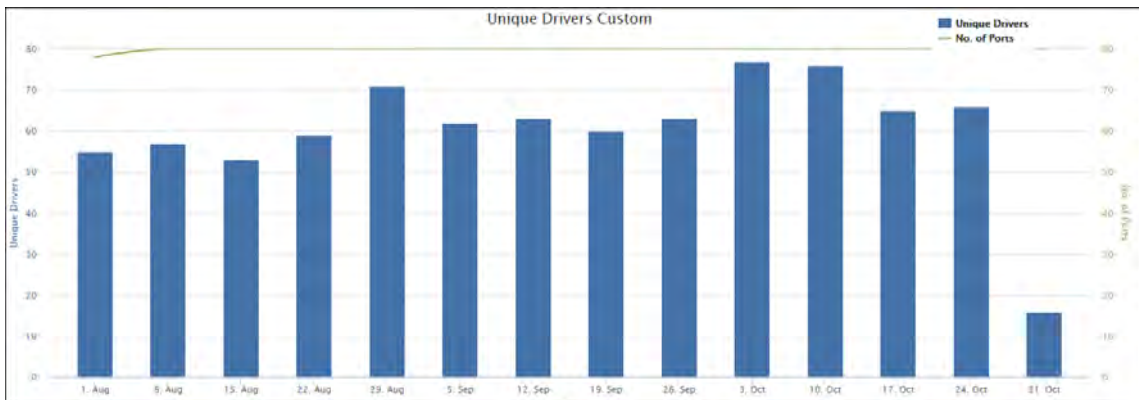




Graph 2: Individual Unique Drivers Plugging in Sessions by Day



Graph 3: Individual Unique Drivers Plugging in Sessions by Week



Graph 4: Individual Unique Drivers Plugging in Sessions by Month

