

STATE OF INDIANA

INDIANA UTILITY REGULATORY COMMISSION

IN THE MATTER OF THE PETITION BY )  
CAVALRY ENERGY CENTER, LLC FOR )  
CERTAIN DETERMINATIONS BY THE )  
COMMISSION WITH RESPECT TO ITS )  
JURISDICTION OVER PETITIONER'S )  
ACTIVITIES AS A GENERATOR OF )  
ELECTRIC POWER )

CAUSE NO. 45474

**CAVALRY ENERGY CENTER, LLC'S SUBMISSION OF**  
**LATE-FILED ATTACHMENT**

Petitioner, Cavalry Energy Center, LLC, by counsel, respectfully submits its Late-Filed  
Attachment ZM-4 to Petitioner's Exhibit 1 filed in this Cause on December 31, 2020.

Respectfully submitted,



---

Randolph L. Seger (240-49)  
Michael T. Griffiths (26384-49)  
Dentons Bingham Greenebaum LLP  
2700 Market Tower  
10 West Market Street  
Indianapolis, Indiana 46204  
Telephone: (317) 635-8900  
Fax: (317) 236-9907  
[randy.seger@dentons.com](mailto:randy.seger@dentons.com)  
[michael.griffiths@dentons.com](mailto:michael.griffiths@dentons.com)

Attorneys for Petitioner,  
Cavalry Energy Center, LLC

**CERTIFICATE OF SERVICE**

The undersigned hereby certifies that a copy of the foregoing was electronically delivered this 12<sup>th</sup> day of January, 2021, to the following:

Office of Utility Consumer Counselor  
115 West Washington Street, Suite 1500 South  
Indianapolis, Indiana 46204  
[thaas@oucc.in.gov](mailto:thaas@oucc.in.gov)  
[infomgt@oucc.in.gov](mailto:infomgt@oucc.in.gov)



---

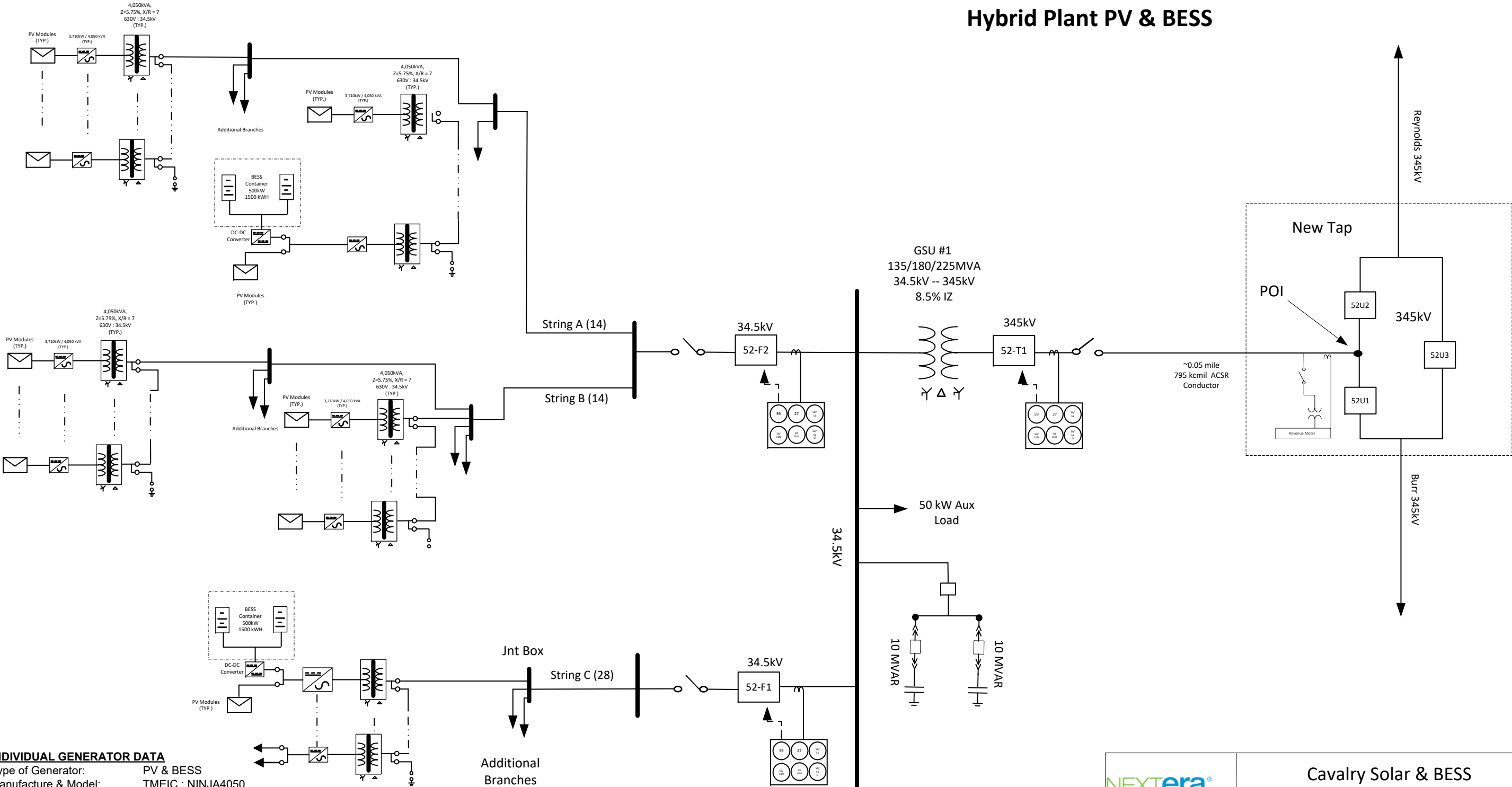
An attorney for Petitioner,  
Cavalry Energy Center, LLC

**CAVALRY ENERGY CENTER, LLC**

**Attachment ZM-4**

56 X TMEIC ESS-PSCS 3.71 MW / 4.05MVA Inverters 226.80MVA

Shared Facilities with J1067  
Hybrid Plant PV & BESS




**INDIVIDUAL GENERATOR DATA**

Type of Generator: PV & BESS  
Manufacture & Model: TMEIC : NINJA4050  
Number of Gen Units: 56  
MVA Rating: 4.05MVA  
Rated Output (Pmax): 3.71MW  
Net Output: \_\_\_\_\_ MW  
Voltage Rating: : 0.630V  
Rated PF: 0.92

**EQUIVALENT GENERATOR DATA**

MVA Rating: 226.80MVA  
Rated Output (Pmax): 207.76 MW  
PF Regulation Range: +/- 0.95

ISO Application  
NOT FOR CONSTRUCTION

	Cavalry Solar & BESS			
	Power: 200 MW PV & 60MW BESS Interconnect Voltage: 345 kV			
DRAWN BY: C. W. Robinson	Size	FSCM No	DWG No.	REV
	B	N/A	E1	1
06/20/2020	SCALE: NONE		SHEET: 1 OF 1	